



**Rod Donald Banks Peninsula Trust**  
**Te Pātaka o Rākaihautū**

**Statement of Intent**

**For the year**  
**1 July 2026 - 30 June 2027**  
**FY 2027**

**Rod Donald Banks Peninsula Trust Contact Details**

Registered office Christchurch City Council, 53 Hereford Street, Christchurch  
Postal Address: P.O. Box 5, Little River, Banks Peninsula 7546  
Email: manager@roddonaldtrust.co.nz  
Phone 027 294 5219  
Physical Address: c/o Sidekick, 34 Allen Street, Christchurch Central City, Christchurch 8013

**Current Trustees as of 30 June 2026**

Jennifer Chowaniec – Chair  
Francesca Brown – Deputy Chair  
Tyrone Fields  
Duncan Bright  
Anna Cameron  
Kamala Hayman  
Alice Shanks  
Joseph Zonneveld

## Contents

1	Introduction.....	4
2	Objectives .....	4
3	Governance statement.....	4
3.1	Guiding Values.....	4
3.2	Responsibility to the Christchurch City Council.....	4
4	Nature and Scope of Activities .....	5
4.1	Reducing carbon emissions .....	5
4.2	Health and Safety .....	6
4.3	Accountability.....	6
4.4	Remuneration.....	6
4.5	Engagement with mana whenua.....	6
4.6	Engagement with stakeholders .....	6
5	Performance targets and measures .....	7
5.1	Non-financial performance targets .....	7
5.2	Financial performance targets .....	9
6	Accounting Policies.....	14
6.1	Activities for which compensation is sought from any local authority .....	14
Appendix A	Trust objectives .....	15
Appendix B	Trust’s area of interest .....	16
Appendix C	Project detail .....	17
C.1	Access – Wāhi Uru .....	17
C.2	Biodiversity Projects – Rerenga Rauropi .....	18
C.3	Knowledge – Mātauranga .....	19
C.4	Building stronger relationships with Council and others .....	20

## 1 Introduction

Rod Donald Banks Peninsula Trust Te Pātaka o Rākaihautū (RDBPT, the Trust) is a Council Controlled Organisation (CCO) as defined in the Local Government Act 2002 (LGA) and is a Trust for charitable purposes. It is governed by Trustees, the majority of whom are appointed by Christchurch City Council (CCC, the Council).

RDBPT was named to honour the memory of former MP Rod Donald and his commitment to Banks Peninsula. The Trust's hallmark has been entrepreneurship and practical achievement, important values to Rod Donald.

The negotiation and determination of a Statement of Intent (SOI) is a public and legally required record of the accountability relationship between the Trust and the Council.

This SOI is prepared in accordance with Section 64(1) of the LGA. It sets out the objectives, governance, nature and scope of activities, and targets and performance measures.

The SOI is reviewed annually by the Council and covers a three-year period.

## 2 Objectives

RDBPT exists for the benefit of the present and future inhabitants of Banks Peninsula and for visitors to Banks Peninsula. The Trust Deed includes a wide set of objectives for sustainable management, the protection, preservation and enhancement of the environment, recreation, culture and heritage. The objectives are listed in full in Appendix A.

The primary objectives are to:

- a) Create and sustain enduring walking and cycling public access on Banks Peninsula for the benefit of current and future citizens and visitors;
- b) Ensure that projects and activities protect and enhance local species and biodiversity;
- c) Apply a collaborative partnership approach to achieve Trust objectives and avoid duplication of activity;
- d) Engage with Te Hapū o Ngāti Wheke (Rāpaki), Te Rūnanga o Koukourarata, Wairewa Rūnanga, Te Taumutu Rūnanga and Ōnuku Rūnanga to seek their views on the value of Banks Peninsula's Mana Whenua, Mana Moana and Mana Tangata; and
- e) Align projects with existing or future projects or initiatives of the Council wherever practicable.

## 3 Governance statement

RDBPT is governed by up to nine trustees, with up to seven appointed by the Council. They govern RDBPT in accordance with their legal obligations, the objectives of the Trust and the terms of the trust deed.

### 3.1 Guiding Values

The decisions of the trustees reflect the following values:

- Kaitiakitanga/stewardship;
- Mahi tahi/partnership; and
- Rangatiratanga/leadership.

### 3.2 Responsibility to the Christchurch City Council

The Trustees will ensure that the Council is informed of all major changes affecting the Trust. Information will be communicated to the Council by the RDBPT through annual and half year reports.

The Trust will operate on a no surprises basis for issues of relevance to the Council. Early notice will be given of issues requiring its agreement.

The Trust will notify the Council of any property purchase or disposal. The Trust will seek approval from the Council if it intends to carry out activities outside of the nature and scope listed above. The Trust will inform the Council External Governance Manager of any submissions made. The Trust's risk policy includes informing the Council of any issues or risks that might impact the Council.

## 4 Nature and Scope of Activities

Activities are undertaken within the region as defined in the Trust Deed which is the district area administered by the Banks Peninsula District Council prior to amalgamation with the Christchurch City Council (the Banks Peninsula area). A map is included as Appendix B.

Our activities are guided by our strategic pou and priorities in our Strategic Plan.

RDBPT's tō tāto tirohanga/vision is: to create a thriving and enduring ecosystem of trails and regenerating landscapes on Te Pātaka o Rākaihautū – Banks Peninsula.

RDBPT has three strategic pou:

- Wāhi Uru/Access - Creating an enduring network of walking and biking trails to foster deeper connections between people and place and that enable low carbon recreation;
- Rerenga Rauopi/Biodiversity - Supporting protection and regeneration of Te Pātaka o Rākaihautū by encouraging native biodiversity on a landscape scale; and
- Mātauranga/Knowledge - Creating stewards of Te Pātaka o Rākaihautū through knowledge of its flora and fauna, geology and history.

A summary of the projects and social enterprises through which the Trust intends to deliver on its three strategic pou is provided in Appendix C.

### 4.1 Reducing carbon emissions

The Trust acknowledges and supports the Council's targets to reduce greenhouse gas emissions in the district. The Trust has assessed its carbon footprint using Cogo (a tool that was part of Terra Nova not for profit programme for resilience and emissions reduction) and has created an action plan to reduce its carbon footprint (greenhouse gas emissions) by 3% by 2030 (from 2024/25 baseline levels).

The 2024/25 baseline levels for Scope 1 were an estimate of 1.46 tonnes.

Key actions relate to Scope 1 emissions and include: implementing the Ataahua wetland restoration project; encouraging car-pooling and online meetings; carrying out native planting and regeneration from gorse to natives on Rod Donald Hut land; funding weed and pest control; buying local and plant-based food; and reducing food waste.

We are developing and promoting tracks that can be used without the need for private vehicles, such as the ability to use public transport to Diamond Harbour and then walk or bike a range of tracks from there. Another example is the ability to bike to Little River from Christchurch and then undertake other walking and biking trails from there. Pest and weed control makes native forests healthier and able to absorb more carbon. We encourage people to recreate on Banks Peninsula rather than travelling a long way. We support initiatives that enable landowners to regenerate their land into native vegetation. The Trust will explore opportunities to use banks that rank highly in climate friendly profile tables.

The Trust is committed to considering carbon reduction opportunities in all new projects and asset acquisitions. For example, how a track is built and maintained, and what materials to use when designing and building a shelter or hut.

## **4.2 Health and Safety**

The Trust maintains and regularly reviews its Health and Safety Plan and this topic is a standing item on every Trust Board meeting agenda. The Plan includes a provision to inform the Council of any events notified to Worksafe. Health and safety incidents are reported to the Board and the Employment, Audit and Risk Portfolio Group as soon as practical.

## **4.3 Accountability**

The Trust welcomes the opportunity to present annually to the Council and/or Te Pātaka o Rākaihautū Banks Peninsula Community Board.

The Trust meets its statutory deadlines and will make efforts to report earlier where possible. The Trust publishes its Statement of Intent and Annual Report on its website.

## **4.4 Remuneration**

All contractors and employees engaged by the Trust are paid at rates above the living wage.

## **4.5 Engagement with mana whenua**

The Trust seeks to apply the principles of Te Tiriti to its activities, continue to learn and embrace these principles further, and to develop its relationships with mana whenua. The Trust regularly invites mana whenua to provide direction for projects the Trust is working on and embraces initiatives that help mana whenua achieve their aspirations.

## **4.6 Engagement with stakeholders**

The Trust regularly engages with a range of stakeholders involved in public access, recreation, biodiversity and knowledge sharing. This occurs through a range of methods. The Trust has developed relationships with other CCO's, particularly Riccarton House and Bush.

## 5 Performance targets and measures

### 5.1 Non-financial performance targets

The Trust's strategic priorities align with the following Christchurch City Council strategic priorities:

- Be an inclusive and equitable city
- Champion Ōtautahi-Christchurch
- Build trust and confidence in the Council
- Reduce emissions as a Council and as a city
- Manage ratepayers' money wisely
- Actively balance the needs of today's residents

The Trust's strategic priorities are set out in the table below:

<b><i>Wāhi uru Whakaarotau/Access Priorities and targets</i></b>
Te Ara Pātaka is nationally recognised as a walking and biking route from Christchurch to Akaroa with a network of connecting side-routes, shelters and huts
Use the Rod Donald Hut as a gateway to increase the range of people accessing Banks Peninsula
Maintain and enhance the Little River Rail Trail as a nationally recognised Ngā Haerenga Heartland Ride and as a walking and running route
Supporting the Head to Head Walkway to become a continuous pathway around Whakaraupō/Lyttelton Harbour
Foster a network of biking trails which invites people of all ages and abilities to explore the Peninsula whilst benefiting and connecting its communities
<b><i>Rerenga Rauropi Whakaarotau/Biodiversity Priorities and targets</i></b>
Protect and restore biodiversity along Te Ara Pātaka, Little River Rail Trail, Head to Head Walkway and at Trust-supported huts and shelters
Support and initiate the protection of biodiversity values
Support and encourage the protection and regeneration of native vegetation to restore indigenous biodiversity and improve ecological resilience from the impacts of climate change
Support and provide for coordinated pest and weed control to protect native species and increase ecological integrity
<b><i>Mātauranga Whakaarotau/Knowledge Priorities and targets</i></b>
Deliver the Banks Peninsula Walking Festival in a way that encourages the exploration of the flora, fauna, geology and history
Increase access to quality information about trails, geology, history, culture and biodiversity
Enable new research and the sharing of existing research

The non-financial performance targets are as follows:

#	Non-financial performance targets	Strategic Pou delivery		
		Access	Biodiversity	Knowledge
	<i>Please note: Dates for achieving the Targets are the end of the financial year for every target.</i>			
<b>1</b>	<b>Create new public access route from Little River to Te Ara Pātaka via the western ridgeline.</b>			
	26/27: <b>Publicly open new track, promote, and maintain.</b> Make improvements.			
	27/28: Ongoing promotion and maintenance. Make improvements.			
	28/29: Ongoing promotion and maintenance. Make improvements.			
<b>2</b>	<b>Create new public access route from Robinsons Bay to Takapūneke</b>			
	26/27: <b>Complete access negotiations</b> for a route from Robinsons Bay to Takapūneke. Finalise route and begin track formation.			
	27/28: Complete track formation and waymarking.			
	28/29: Complete survey, easements, signage.			
<b>3</b>	<b>Upgrade and maintain tracks</b>			
	26/27: <b>Maintain tracks we are responsible for</b> so that they remain “Easy Tramping Track” Standard (SNZ HB 8630:2004). These tracks include Monument North, Little Mt Herbert Summit link track, private part of Faulkner, track to Rod Donald Hut, and Te Kata. Upgrade final small section of Faulkner track if landowner agrees to easement and bike access. Repair Faulkner storm slips if geotechnically possible. Replace Monument South Track with alternative track if landowner agrees. Re-route part of Mt Herbert Walkway in partnership with DOC.			
	27/28: Maintain tracks we are responsible for so they continue to be “Easy Tramping Track” Standard (SNZ HB 8630:2004).			
	28/29: Maintain tracks we are responsible for so they continue to be “Easy Tramping Track” Standard (SNZ HB 8630:2004).			
<b>4</b>	<b>Providing public with accurate information about walking and biking trails</b>			
	26/27: <b>Provide accurate walking and cycling website information</b> , printed walking products and social media communications. Create a Little River/Wairewa/Southern Bays walking brochure.			
	26/27: <b>Develop one new website</b> to replace our three current websites – Rod Donald Trust, Banks Peninsula Walks, and Little River Rail Trail.			
	27/28: Provide accurate walking and cycling website information, printed walking products and social media communications.			
	28/29: Provide accurate walking and cycling website information, printed walking products and social media communications.			
<b>5</b>	<b>Reduce priority pests and weeds in locations that are strategic for biodiversity and/or public access.</b>			
	26/27: Continue to <b>reduce priority pests</b> , (possums, hedgehogs, mustelids, rats, feral cats) <b>and weeds</b> (gorse, old man’s beard, cherry plum, willow) <b>to agreed project pest control outcomes</b> (catch data and presence monitoring showing decrease) <b>and weed control outcomes</b> (decrease in old man’s beard, gorse free boundaries, no gorse on rocky knolls, keeping gorse free areas free of gorse, decrease in cherry plum, no willows remain). <b>At Te Ahu Pātiki and Orton Bradley Parks.</b>			
	27/28: Further reductions of priority pests and weeds as above, at Te Ahu Pātiki and Orton Bradley Parks (the Orton Bradley part finishes November 2027).			
	28/29: Further reductions of priority pests and weeds as above, at Te Ahu Pātiki.			
<b>6</b>	<b>Improve biodiversity on the lake/wetland margins of Te Roto o Wairewa and Te Waihora near the Little River Rail Trail</b>			

26/27: Control priority weeds that re-grow or establish themselves <b>on the Little River Rail Trail alongside Te Roto o Wairewa, between Catons Bay and Kinloch Road</b> , utilising volunteer labour.			
26/27: <b>Begin Ataahua saltmarsh wetland restoration project.</b>			
27/28: Control priority weeds that re-grow or establish themselves on the Little River Rail Trail alongside Te Roto o Wairewa, between Catons Bay and Kinloch Road, utilising volunteer labour.			
27/28: Continue Ataahua saltmarsh wetland restoration project.			
28/29: Continue Ataahua saltmarsh wetland restoration project.			
<b>7 Deliver the Banks Peninsula Walking Festival. Participants learn about flora, fauna, geology and history.</b>			
26/27: <b>Deliver Walking Festival</b> with overall positive feedback (based on survey of participants) and annual improvements based on our walking festival strategy.			
27/28: Deliver Walking Festival with overall positive feedback (based on survey of participants) and annual improvements based on previous year's evaluation.			
28/29: Deliver Walking Festival with overall positive feedback (based on survey of participants) and annual improvements based on previous year's evaluation.			
<b>7 Support research</b>			
26/27: <b>Support a research project</b> that will deliver value to the Peninsula in access, biodiversity or knowledge through a research contract. Share the results of the research from previous year's project.			
27/28: Support a research project that will deliver value to the Peninsula in access, biodiversity or knowledge through a research contract. Share the results of the research from previous year's project.			
28/29: Support a research project that will deliver value to the Peninsula in access, biodiversity or knowledge through a research contract. Share the results of the research from previous year's project.			
<b>8 Reduce carbon emissions</b>			
26/27: <b>Reduce greenhouse gas emissions</b> by a further 1% on the 24/25 baseline level for scope 1 through the key actions listed in 4.1.			
27/28: Reduce greenhouse gas emissions by a further 1% on the 24/25 baseline level for scope 1 through the key actions listed in 4.1.			
28/29: Reduce greenhouse gas emissions by a further 1% on the 24/25 baseline level for scope 1 through the key actions listed in 4.1.			

## 5.2 Financial performance targets

Financial forecasts are provided for the next three years.

- Capital and operational funding injections from the Christchurch City Council were allocated in the Council's Long Term Plan beginning in FY24. Ongoing operational funding of \$100,000 per annum will continue in FY27 - FY34. A capital grant from the Council of 1.35M is scheduled in the LTP for FY27.
- Strategic grants and project expenditure includes grant commitments and progressing the projects listed in Appendix C.

### 5.2.1 3 Year Financial Forecast FY2027-2029

<b>Income</b>	<b>FY 2027</b>	<b>FY 2028</b>	<b>FY 2029</b>
Council Funding	1,450,000	100,000	100,000
Banks Peninsula Walking Festival	12,000	12,600	13,230
Rod Donald Hut Fee Revenue	43,500	44,805	61,149
Te Ara Pātaka Lease Income	9,157	9,157	9,157
Walking Products	1,700	1,785	1,874
Donations	5,500	5,775	6,064
Grants received	90,000	0	0
<b>Total Income</b>	<b>1,521,857</b>	<b>174,122</b>	<b>191,474</b>
<b>Other Income</b>			
Interest Income	89,516	147,999	117,115
<b>Total Other Income</b>	<b>89,516</b>	<b>147,999</b>	<b>117,115</b>
<b>Total Income</b>	<b>1,611,373</b>	<b>322,121</b>	<b>308,589</b>
<b>Expenses</b>			
<b>Overheads</b>			
<b>Trust Management</b>			
Trust Management salary, wages & travel reimbursement	171,616	177,610	183,840
<b>Total Trust Management</b>	<b>171,616</b>	<b>177,610</b>	<b>183,794</b>
<b>Other overheads</b>			
<b>Administration Costs</b>			
Accounting fees including payroll	22,485	23,160	23,855
Audit fees	20,390	20,936	21,500
Bank Fees	80	82	85
General Legal fees	4,000	4,120	4,244
Givealittle Service Fees	150	155	159
Insurance - excluding Rod Donald Hut	2,800	2,884	2,971
Meeting expenses	5,665	5,835	6,010
Other Administrative Expenses - overheads	4,000	4,120	4,244
Office equipment and supplies	500	515	530
<b>Total Administration Costs</b>	<b>60,070</b>	<b>61,807</b>	<b>63,598</b>
Depreciation & Amortisation	5,334	5,032	4,739
<b>Total other overheads</b>	<b>65,404</b>	<b>66,839</b>	<b>68,337</b>
<b>Total Overheads</b>	<b>237,020</b>	<b>244,449</b>	<b>252,131</b>
<b>Operating Expenses</b>			
Banks Peninsula Walking Festival	16,400	16,600	16,800
BPNFCC Group	250	258	265
Conferences and Training	3,500	3,605	3,713
Electric Bike Charging and Lock Stations operating cost	4,000	4,000	4,000
Te Kata Fire sensor operating expenses - data maintenance contribution	3,000	3,000	3,000
Minor Administrative Projects	4,500	4,635	4,774
Minor Miscellaneous operating expenses	2,500	2,575	2,652
Mt Sinclair Day Shelter Maintenance Costs		2,000	2,000
Rod Donald Hut Operating and Maintenance Costs	28,560	29,131	39,714

Te Ara Pātaka Maintenance	20,000	20,400	20,808
Walking products - design and printing	2,500	2,575	2,652
Website Hosting and ongoing I.T support	11,000	11,330	11,670
<b>Total Operating expenses</b>	<b>96,210</b>	<b>100,109</b>	<b>112,048</b>
<b>Total Overheads &amp; Operating Expenditure</b>	<b>333,230</b>	<b>344,558</b>	<b>364,179</b>
<b>Strategic Grants</b>			
Banks Peninsula Conservation Trust	43,709	45,020	0
Orton Bradley Park	15,000	0	0
Te Ahu Patiki Charitable Trust	65,000	65,000	65,000
Minor Grants & Contributions	10,000	10,000	10,000
Grants Received - currently unspecified	20,000	20,600	21,218
<b>Total Strategic Grants</b>	<b>153,709</b>	<b>140,620</b>	<b>96,218</b>
<b>Project Expenditure</b>			
<b>Te Ara Pātaka Projects</b>			
New signage - tracks and huts	10,000	5,000	
Te Kata Track construction & enhancement	131,000	22,000	3,000
Te Kata Track fire sensor installation	12,000		
Takapuneke to Robinsons Bay design, construction	50,000	100,000	100,000
Mt Sinclair Shelter build & install	25,000		
Tūpari Reserve Packhorse Hut Track signs	10,000		
Re-routing Mt Herbert Walkway	50,000		
Storm damage track repairs - Faulkner, Monument South/replacement track	70,000		
Akaroa to Hilltop contract access negotiations	20,000		
Akaroa to Hilltop construction		100,000	100,000
Future storm damage major repairs to tracks contingency		30,000	30,000
<b>Rod Donald Hut/Nature Trail</b>			
Te Ara Māhuri Nature Trail Construction & Interpretation	8,889		
Scoping additional bunkhouse	10,000		
Building additional bunkhouse		90,000	
<b>Biodiversity projects</b>			
Biodiversity Programme	50,000	50,000	80,000
Ataahua Wetland Restoration project	14,500		
<b>Little River Rail Trail</b>			
Rail Trail Enhancements	5,000	5,000	5,000
Electric Bike Charging and Lock Stations	90,000		
<b>Other</b>			
Communication & Engagement Projects	9,000	9,000	9,000
New website	10,000	0	0
Research contract	20,000	20,000	20,000
<b>Total Project Expenditure</b>	<b>595,389</b>	<b>431,000</b>	<b>347,000</b>
<b>Total Strategic Grants and Project Expenditure</b>	<b>749,098</b>	<b>571,620</b>	<b>443,218</b>
<b>Total Expenses</b>	<b>1,082,328</b>	<b>916,178</b>	<b>807,397</b>
<b>Surplus (Deficit)</b>	<b>529,045</b>	<b>(594,057)</b>	<b>(498,808)</b>

## 5.2.2 Forecast Analysis 2025/2026 (YTD to May 2026)

### Basis of Preparation:

This report is prepared solely for the confidential use of Rod Donald Banks Peninsula Trust. In the preparation of this report Sidekick CA Limited has relied upon the unaudited financial and non-financial information provided to them. The analysis and report must not be recited or referred to in whole or in part in any other document. The analysis and report must not be made available, copied or recited to any other party without our express written permission. Sidekick CA Limited neither owes nor accepts any duty to any other party and shall not be liable for any loss, damage or expense of whatsoever nature which is caused by their reliance on the report or the analysis contained herein.

## Rolling 12 Month Forecast

<b>PROFIT &amp; LOSS</b>	<b>2025/2026</b>	<b>2026/2027</b>	<b>2027/2028</b>	<b>2028/2029</b>
<b>Revenue</b>				
Capital Project Donations	\$536,753	\$5,500	\$5,776	\$6,064
Council Funding	\$100,000	\$1,450,000	\$100,000	\$100,000
Operating Revenue	\$125,571	\$155,874	\$216,346	\$202,526
Grants Received	\$90,000	\$90,000	\$0	\$0
<b>Total Revenue</b>	<b>\$852,325</b>	<b>\$1,701,374</b>	<b>\$322,122</b>	<b>\$308,590</b>
<b>Expenses</b>				
Operating Expenses	\$56,739	\$96,210	\$100,109	\$112,048
Overheads	\$173,072	\$237,020	\$244,449	\$252,131
Strategic Grants and Project Expenditure	\$334,153	\$749,098	\$571,620	\$443,218
<b>Total Expenses</b>	<b>\$563,965</b>	<b>\$1,082,328</b>	<b>\$916,178</b>	<b>\$807,397</b>
<b>Operating Profit</b>	<b>\$288,360</b>	<b>\$619,046</b>	<b>-\$594,056</b>	<b>-\$498,807</b>
<b>Net Income</b>	<b>\$288,360</b>	<b>\$619,046</b>	<b>-\$594,056</b>	<b>-\$498,807</b>

<b>BALANCE SHEET</b>	<b>2025/2026</b>	<b>2026/2027</b>	<b>2027/2028</b>	<b>2028/2029</b>
<b>ASSETS</b>				
Cash & Equivalents	\$282,453	\$966,943	\$178,504	-\$311,779
Accounts Receivable	\$27,315	\$27,696	\$27,696	\$27,696
Inventory	\$8,013	\$8,013	\$8,013	\$8,013
Work In Progress	\$132,321	\$0	\$0	\$0
<b>Total Current Assets</b>	<b>\$450,101</b>	<b>\$1,002,652</b>	<b>\$214,213</b>	<b>-\$276,070</b>
Fixed Assets	\$315,441	\$442,430	\$527,398	\$522,659
Investments or Other Non-Current Assets	\$1,833,000	\$1,833,000	\$1,833,000	\$1,833,000
<b>Total Non-Current Assets</b>	<b>\$2,148,441</b>	<b>\$2,275,430</b>	<b>\$2,360,398</b>	<b>\$2,355,659</b>
<b>Total Assets</b>	<b>\$2,598,542</b>	<b>\$3,278,082</b>	<b>\$2,574,611</b>	<b>\$2,079,588</b>
<b>LIABILITIES</b>				
Accounts Payable	\$53,846	\$114,339	\$4,924	\$8,709
Other Current Liabilities	\$0	\$0	\$0	\$0
<b>Total Current Liabilities</b>	<b>\$53,846</b>	<b>\$114,339</b>	<b>\$4,924</b>	<b>\$8,709</b>
<b>Total Non-Current Liabilities</b>	<b>\$0</b>	<b>\$0</b>	<b>\$0</b>	<b>\$0</b>
<b>Total Liabilities</b>	<b>\$53,846</b>	<b>\$114,339</b>	<b>\$4,924</b>	<b>\$8,709</b>
<b>Net Assets</b>	<b>\$2,544,697</b>	<b>\$3,163,743</b>	<b>\$2,569,687</b>	<b>\$2,070,880</b>
<b>EQUITY</b>				
Retained Earnings	\$2,244,336	\$2,536,697	\$3,163,743	\$2,569,687
Current Earnings	\$300,360	\$627,046	-\$594,056	-\$498,807
<b>Total Equity</b>	<b>\$2,544,697</b>	<b>\$3,163,743</b>	<b>\$2,569,687</b>	<b>\$2,070,880</b>

## Forecast Analysis Assumptions

- Profit & Loss activity is based off provided figures from final Statement of Intent prepared by Rod Donald Banks Peninsula Trust.
- 2025 / 2026 information is based off actuals data along with expected for the remainder of financial year.
- Capital Project Donations is materially higher in 2025 / 2026 financial year due to large one off \$500,000 donation.
- Grant funding has been received in the 2026 and 2027 financial years of \$90,000 each year in relation to the Trust's MBIE E-Bike Charging Project. The trust is responsible for the project but contracts the work out.
- Inventory has been held at a constant value throughout forecasted years and not expected to materially move.
- Work In Progress to the Te Ara Pataka Track upgrade project is to be completed in the 2027 financial year.
- Upgrades & improvements to the Rod Donald Hut are scheduled for the 2028 financial year, under Fixed Assets.
- Investments are recorded at a constant value across the years, with interest being assumed to be withdrawn upon each investment maturity and the principal funds reinvested.
- Little River Weed Control project funding held on balance sheet has been reduced by the amount of expense allocated in the 2026 financial year, and then further reduced as is expected that all funds will be allocated by the end of financial year.
- Accounts Receivable includes accrued revenue from Investments. This has been held as a constant value.
- 2027 Accounts Payable includes GST payment on large council funding amount received.

## 6 Accounting Policies

The current accounting policies are consistent with NZ accounting standards and can be found in detail in the Trust's last annual report on its website.

The financial statements are prepared on the basis of historical cost, except for the revaluation of certain non-current assets.

### 6.1 Activities for which compensation is sought from any local authority

Currently there are no activities for which compensation will be sought from any local authority.

## Appendix A Trust objectives

The RDBPT is a Trust for charitable purposes.

The RDBPT exists for the benefit of the present and future inhabitants of Banks Peninsula and for visitors to Banks Peninsula.

The RDBPT's activities focus on the area within the district which was administered by the Banks Peninsula District Council immediately prior to its amalgamation with the Christchurch City Council (the Banks Peninsula area). A map is included as Appendix B to this Statement of Intent.

The objectives of the RDBPT are:

- (a) to promote sustainable management and conservation (consistent with the purposes and principles of the Resource Management Act 1991 and the Conservation Act 1987 and any replacement legislation) of the natural environment in the Bank Peninsula area;
- (b) to establish, support or facilitate environmental based projects that are focussed on:
  - (i) the maintenance and development of recreation facilities including parks, reserves, walkways and affordable camping grounds in the Bank Peninsula area;
  - (ii) providing public access to recreation facilities including parks, reserves, walkways and affordable camping grounds in the Bank Peninsula area;
  - (iii) the reinstatement and preservation of native vegetation in the Bank Peninsula area;
  - (iv) the enhancement of the natural biodiversity of the Bank Peninsula area;
  - (v) the restoration of the Bank Peninsula area waterways to their natural state; and
  - (vi) the protection of native endangered species present in the Bank Peninsula area;
- (c) to establish, support or facilitate projects that are focussed on the protection, preservation and enhancement of areas of historical or cultural significance, or the built heritage of the Bank Peninsula area;
- (d) to undertake or facilitate in any other way research projects or scientific enquiries to carry out the Objects;
- (e) to provide educational opportunities to further the public's understanding or enjoyment of the natural, historical and cultural qualities of the Bank Peninsula area;
- (f) to commission or otherwise support research and monitor projects relating to the status and quality of the natural and physical environment throughout the Bank Peninsula area;
- (g) to purchase or lease land to:
  - (i) carry out any improvements on land for the sustainable management of the environment or more general environmental or conservational purposes of the Trust,
  - (ii) provide facilities or opportunities for the educational purposes of the Trust;
- (h) to source and allocate funds for projects which support, promote or otherwise contribute to the Objects;
  - (i) to seek the support and involvement of appropriate persons, organisations and agencies, (including the Christchurch City Council) and work alongside or collaboratively with such persons, organisations and agencies to carry out the Objects;
  - (j) to hold seminars, tutorials and lectures within the Bank Peninsula area and throughout Canterbury to demonstrate research relating to the objects, and to encourage the public to become involved with or to generally promote the aims and purposes of the Trust to the community;

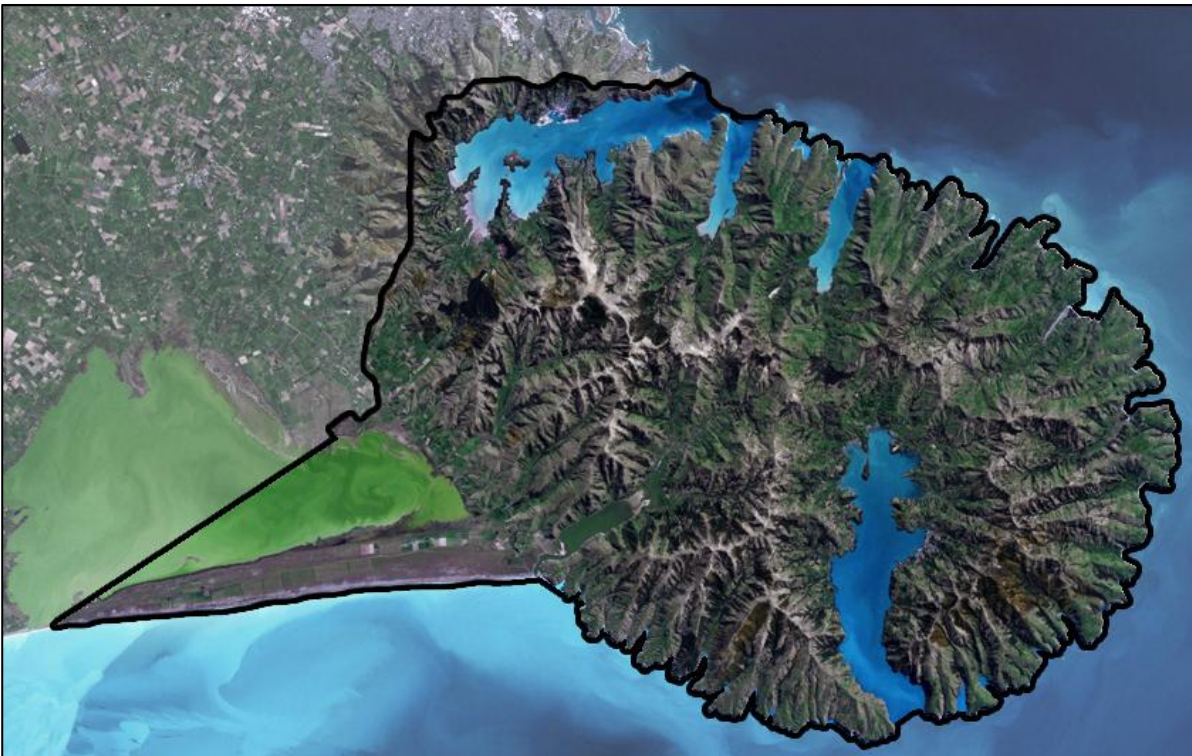
- (k) to carry out any other charitable purpose which is capable of being carried out in connection with the Objects or may directly, or indirectly, advance the Objects;
- (l) to raise money and to seek, accept and receive gifts, donations, grants, endowments, legacies and bequests of money or in kind for the Objects; and
- (m) to do all such other acts and things that are incidental or conducive to the attainment of the Objects.

In pursuance of the objectives of the RDBPT, the Trustees are required to have regard to:

- (a) the views of Te Hapū o Ngāti Wheke (Rāpaki), Te Rūnanga o Koukourarata, Wairewa Rūnanga, Te Taumutu Rūnanga and Ōnuku Rūnanga in respect to the value of Banks Peninsula's Mana Whenua (Land), Mana Moana (Waterways) and Mana Tangata (People);
- (b) the potential for alignment between the activities of the Trust and any existing or future projects or initiatives of the Christchurch City Council;
- (c) whether other sources of funding or support are available, including assistance provided through industry or regional development policies and programmes of local authorities or central government;
- (d) the objectives, roles and activities of any other organisation engaged in similar activities on Banks Peninsula.

## **Appendix B Trust's area of interest**

The map below shows the area formerly administered by Banks Peninsula District Council. The Trust Deed directs that its funds are to be used to achieve objectives primarily within this area.



## **Appendix C      Project detail**

The following are projects which are either in progress and will continue into FY2027 and beyond, or new projects to be implemented in FY2027.

### **C.1 Access – Wāhi Uru**

#### **C.1.1 Te Ara Pātaka**

This is a multi-day or day walk experience that connects Lyttelton and Akaroa craters via the summit ridgelines of Banks Peninsula, with a network of tracks linking to valleys below. The tramp was formally opened in 2016 and is popular, including with many families and youth groups. Overnight accommodation is provided at the Rod Donald Hut and the Packhorse Hut.

Ongoing work includes maintenance and upgrading of tracks that we are responsible for, which are mostly on private land – Monument North, Little Mt Herbert Summit Link Track, Monument South, the private land part of Faulkner Track, track down to Rod Donald Hut, and Te Kata Track. The main Te Ara Pātaka track can now be walked all year round with no seasonal closures for lambing. A signage manual and signage plans for each organisation have been developed to help the five partners ensure the walkway has consistent and effective signage and wayfinding marking. The partners will progressively update or add new signage as their budgets and capacity allow.

The Trust intends to extend Te Ara Pātaka to Takapūneke, to Saddle Hill and to Little River. It would also like to fill the gap between Gebbies Pass and Crater Rim Walkway. The Trust has considered options provided by a feasibility study into potential route options from Hilltop to Akaroa and is progressing access negotiation for a track from Robinsons Bay to Takapūneke. The Trust has negotiated access for a new route between Little River and Te Ara Pātaka via unformed legal road, Te Whenua Ora and private properties on the ridgeline between Little River and Prices and Kaituna Valleys. The Trust has formed the track and added wayfinding marking. It has surveyed the route. The Trust will soon be: finalising the survey report; finalising the easements and associated steps; finalising and signing the agreement with CCC that delegates responsibilities; completing the stiles and finalising; and printing and installing the signage. The Trust plans to open Te Kata Track to the public in late Spring 2026.

The Trust has carried out some access negotiations for Hilltop to Saddle Hill and decided to put this on hold until some landowner circumstances change. If we can create a track from Hilltop to Takapūneke and from the end of Crater Rim Walkway to Gebbies Pass, there will be an approximately 100km walking track from Godley Head to Takapūneke. Coupled with public and private accommodation, this would become a popular long walk, longer than any Great Walk. This would help meet the vision of the Destination Management Plan.

The Trust has developed a draft Memorandum of Understanding with the partners of Te Ara Pātaka outlining maintenance and management responsibilities. The other partners are the Department of Conservation, Christchurch City Council, Te Ahu Pātiki Charitable Trust and Orton Bradley Park.

The Trust is now underway to establish a new day shelter on Te Ara Pātaka near Mt Sinclair. This will provide shelter from harsh weather, drinking water and a toilet. It will provide an additional daywalk from Hilltop or Port Levy Saddle. The Trust will use private donations to build the shelter and its foundations, drinking water supply and toilet. Interpretation about the shelter, its environment and donors will be included inside the shelter.

The Trust is supporting Mikimiki Conservation Trust with their new public Tūpari Reserve Packhorse Hut Track by creating the signage for the track. This track opened in January 2026 and provides an alternative longer and more varied route to get to the Packhorse Hut and will soon have another track added to it to form a loop within the Reserve.

The Trust is investigating the option of partnering with DOC, QEII, Herenga ā Nuku and landowners to support re-routing the Mt Herbert Walkway through a QEII Covenant so the track is more interesting, has

better views, avoids the main farm area, and is open all year round. It may also become usable by cyclists if DOC and landowners agree.

#### **C.1.1.1 Rod Donald Hut**

Rod Donald Hut is owned and managed by the Trust and provides one of the overnight stays on Te Ara Pātaka. Fees are charged through the Department of Conservation booking system. The Trust intends to continue running the hut as a social enterprise and to use it to build goodwill and to broaden the diversity of communities that recreate on Banks Peninsula. The hut is currently in good condition, so no major upgrades are planned in FY27.

A 1km nature walk named Te Ara Māhuri has been developed near the hut, along with a field guide that includes experiential activities. It opened to the public on 22 February 2025.

We plan to scope adding an additional small separate bunkhouse in 2026-2027 and begin building.

#### **C.1.2 Developing new walking and biking opportunities around Little River**

There are currently no public off-road walks departing directly from Little River except for the Little River Rail Trail. The Trust is supporting the Little River Wairewa Community Trust to create a new off-road route for walking and cycling between the township and nearby attractions. The Trust is also creating a new 11km track (Te Kata) from Little River to Te Ara Pātaka via Te Whenua Ora, unformed legal road and other private land.

The Little River Rail Trail is an important recreational access route from the City to Banks Peninsula, and links with other recreational opportunities being developed in the Little River area. The Little River Rail Trail links the City's Major Cycle Routes with Little River across land administered by the Christchurch City Council, the Selwyn District Council, the Department of Conservation, and Environment Canterbury. These agencies also maintain and upgrade the Rail Trail.

RDBPT promotes the Trail and organises partnership meetings. A joint MOU prepared by the Trust, detailing ongoing maintenance and management responsibilities has been signed. The Trust has created a two year action plan and a strategic plan to help build and maintain momentum so that the trail remains enjoyable for users. The Trust is also exploring partnership opportunities to add new features along the trail. The Trust is undertaking a biodiversity project between Catons Bay and Kinloch Road, in partnership with High Bare Peak Ltd and the Department of Conservation and exploring how to expand project outcomes with mana whenua and stakeholders.

The Trust is also beginning a saltmarsh wetland restoration project at Ataahua alongside the Rail Trail, that will deliver on all three of our pou.

The Trust will be installing five electric bike chargers in Little River and ten in Lincoln, in partnership with Big Street Bikers utilising a grant from the Ministry of Business, Innovation and Employment (MBIE).

The Trust is developing a Little River Rail Trail Passport to engage children and their families in the trail and investigating a professionally organised trail running event. The Trust is also modernising the trail logo.

#### **C.1.3 Supporting Head to Head Walkway in Whakaraupō Lyttelton Harbour**

The Trust participates in the Head to Head Working Party, a working group of the Community Board. The Trust's primary role is to assist the Council in finding access routes across private land. The Trust has recently incorporated the tracks and brochure into the Banks Peninsula Walks website so that information about the Head to Head Walkway is readily accessible to the public.

### **C.2 Biodiversity Projects – Rerenga Rauropi**

Along with pest and weed control at Te Ahu Pātiki and Orton Bradley Park, supporting Banks Peninsula Conservation Trust and Pest Free Banks Peninsula, Te Kāhahu Kahukura and the Banks Peninsula Native Forest and Climate Change Group, our Trust is developing a programme of on-ground biodiversity projects

that it will lead. These will be focused on the lake and wetland margins of Te Roto o Wairewa and Te Waihora, alongside the Little River Rail Trail. These are significant ecosystems that will not regenerate without human assistance. The first project to begin will be a saltmarsh wetland restoration project at Ataahua.

### **C.2.1 Supporting Banks Peninsula Ecological Vision**

The Trust is a signatory to the Banks Peninsula Ecological Vision. Te Ahu Pātiki is part of one of the four areas of contiguous 1000ha protected land. Te Kata Track is within another one of these large areas.

The Trust is providing annual grant funding for a five-year period until March 2029 to enable the Banks Peninsula Conservation Trust to work towards the vision.

#### **C.2.1.1 Banks Peninsula Pest Free 2050**

The Trust, along with Department of Conservation, Banks Peninsula Conservation Trust, Christchurch City Council and others have signed the Banks Peninsula Pest Free Memorandum of Understanding. The Trust has supported this initiative with grants to eradicate feral goats and pigs, and coordination.

#### **C.2.2 Te Ahu Pātiki and Orton Bradley Park**

RDBPT is supporting Te Ahu Pātiki Charitable Trust from FY2025-2029 with track maintenance, signage, and weed and pest control. Te Ahu Pātiki will continue to work on securing further long-term income sources. RDBPT appoints two members to Te Ahu Pātiki Charitable Trust Board. RDBPT is supporting Orton Bradley Park from FY2025-2027 for track maintenance, signage, and weed and pest control.

#### **C.2.3 Building knowledge of carbon sequestration income to support native biodiversity**

The Trust has provided ongoing support to the Banks Peninsula Native Forest Climate Change Group, an informal group of approximately forty people, representing various organisations. The group develops and shares knowledge about carbon sequestration using native biodiversity to support landowners.

## **C.3 Knowledge – Mātauranga**

### **C.3.1 Banks Peninsula Walking Festival**

The Banks Peninsula Walking Festival is led by the Trust and assisted by the Little River Wairewa Community Trust, with excellent support from volunteer guides from the community. It has been held annually since 2013 and has built up a strong reputation. It was previously held in November and is now held in February-March to incorporate better weather conditions. The goal is to provide at least 25 walks annually.

The Festival aims to recover its costs as much as possible through grants and ticket sales. Grant funding has been provided by the Christchurch City Council and Selwyn District Council. A recent strategic review resulted in a strategy for diversifying events included and audiences. In 2026 the event was postponed to May due to the 17 February storm impact on tracks and some of the events replaced.

### **C.3.2 Walking information products**

The Trust has developed the Banks Peninsula Walks Directory, available both in print and online, and a suite of walking brochures. The Trust has also developed the Banks Peninsula Walks website. The Trust intends to continue these products as they benefit the Trust's audience and maintains profile. The Trust ran the Rod Donald Challenge – Get up to 20 in late 2025 and plans to run this again as an engaging way of encouraging the public to access walking and biking tracks.

We will create a new brochure for Wairewa and Southern Bays. Walking and biking trails that are in Whakaraupō, including the Head to Head Walkway, have been added to the Banks Peninsula Walks website and Directory.

The Trust is creating a new user and staff friendly website to replace the existing three websites.

### **C.3.3 Website Upgrade**

The Trust is developing one new website, which will replace our three current existing three sites - Rod Donald Banks Peninsula Trust, Banks Peninsula Walks, and Little River Rail Trail. Centralising material into one website will enhance user experience, better communicate the value the Trust provides, and be easier to update.

### **C.4 Building stronger relationships with Council and others**

The Trust sees the need for an ongoing entity to create a thriving and enduring ecosystem of trails and regenerating landscapes on Te Pātaka o Rākaihautū Banks Peninsula. The Trust intends to seek additional capital funding of \$1.35M for 2030 and \$1.35M for 2033 beyond the FY2027 grant allocated in the Council's existing 2024-2034 LTP budget as well as adding inflationary adjustments to the operational funding through to 2034. The Trust would like to utilise the additional capital this for two major projects (alongside our other mahi) – creating a track from Takapūneke to Hilltop; and improving biodiversity on the wetland margins of Te Roto o Wairewa and Te Waihora alongside the Little River Rail Trail.

The Trust is working to build a stronger relationship with the Council through its projects and activities. These also help the Council achieve its Public Open Space and Biodiversity strategies and the Banks Peninsula Destination Management Plan.

The Trust has formalised its relationship with various government and non-governmental organisations through shared memorandum of understandings.