

Te Ahu Pātiki Charitable Trust



Annual Report 2024



Table of Contents

- 2 Co-Chair Introduction
A message from 2023/24 Co-Chairs Roy Tikao & Sarah Wilson
- 4 Whenua
- 6 Projects
- 7 Pest Free Banks Peninsula
- 8 Promotional Events
- 9 Information
- 10 Board Members
- 11 Sponsors, Funders and Supporters
- 12 Performance Report



Cover and Contents Photo credit: Sam Barrow

Co-Chair Introduction

This is the second Annual Report from Te Ahu Pātiki.

It has been a full year for the new Board learning the many facets of governance and understanding the management needs of this special taonga.

During the year we have further developed our relationship with mana whenua and acknowledge the importance of the Trust's core aspirations in all our decision making.

In simple terms these aspirations are:

- It's all about the Maunga (the mountain)
- Kaitiakitanga / Guardianship
- Partnership
- Respect and Integrity

The restoration of the maunga is a long-term project, a project that will inspire generations to come. It will be decades before we see Te Ahu Pātiki fully flourish and so the Trust - and all who support it - are there for the long haul.

We are grateful for the support and understanding of our funders, supporters and sponsors who collectively are enabling the Trust to realise its long term vision.

A huge thank-you to the Macpac Fund for Good for recognising the unique place Te Ahu Pātiki has within the Peninsula and for their generous and on-going sponsorship of the Trust. As an organisation they demonstrate an understanding of the intergenerational nature of this type of project and respect for the fact that it will take time for the results to flourish. The Fund for Good has donated Macpac Sabre Softshell jackets to the Trust, to which we have added our beautiful logo, designed by Hēmi Korako. It is great to wear the jacket when representing Te Ahu Pātiki.

Thanks to Lyttelton Port Company for their ongoing support and recognition of the project's place within the conservation framework of the harbour.

We couldn't achieve the necessary work to control pests and weeds on the maunga without funding assistance from ECAN, Whaka-ora and the Christchurch City Council along with the various funding streams they manage.

We are also very grateful to have been included in the Orton Bradley Park Mahi mō te Taiao programme.

Te Ahu Pātiki is a QEII covenant and we wish to acknowledge the incredible support and wisdom that comes with that status. Not only does this provide enduring protection to the whenua it also provides tangible support in terms of funding for key projects and biodiversity research.

The tracks on Te Ahu Pātiki are gazetted as part of the Te Ara Pātaka track network. This means that the Trust manages and maintains the tracks and reports to Herenga ā Nuku (Walking Easement NZ) every six months on their condition. This is an additional layer of security in maintaining public access to our tracks.

We have signed up to become part of the Pest Free Banks Peninsula initiative. We have engaged an expert to undertake a Fire Risk Analysis, the scope of the analysis includes both our immediate neighbours Orton Bradley Park and Tūpari. This recognises our shared conservation values and desire to collaborate to protect the whenua.



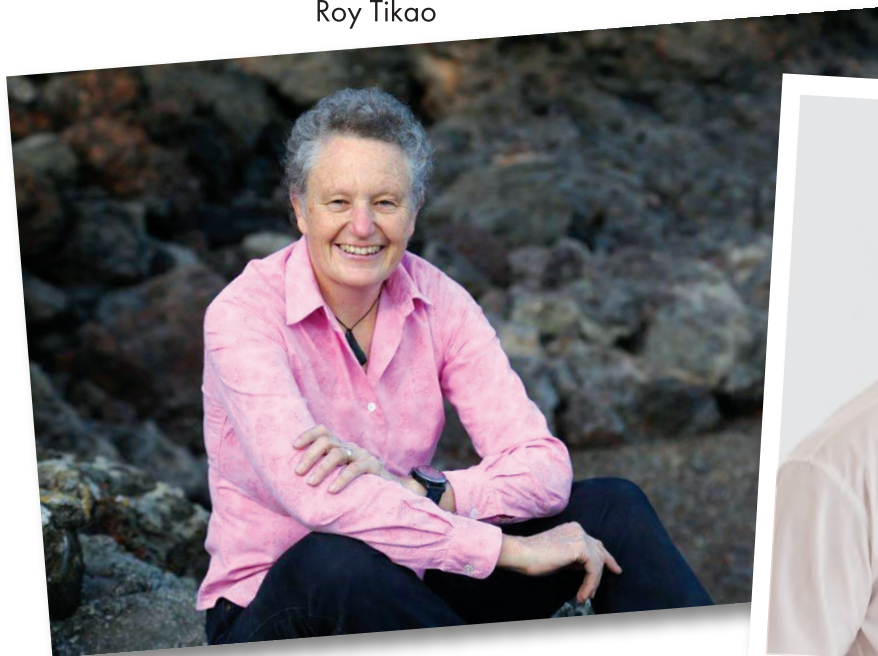
We could not have done all this work without the able assistance of our Kaituitui, Sarah Anderson. Sarah has done a remarkable job of managing the many and varied demands of the maunga and ensuring that the Board has excellent information and advice.

Looking forward, the Trust will focus on:

- Working with partners to develop a management plan
- Sustained and effective pest and weed control operations
- Ensuring we are financially sustainable in the long term

There is much work to be done, and we are committed to ensuring that we continue to support the whenua to stand strong.
Te Ahu Pātiki Matatū!

Sarah Wilson
Roy Tikao



Co-Chair - Sarah Wilson



Co-Chair - Roy Tikao



Whenua

The Trust is continuing to build its kete of knowledge and understanding of the taonga that is Te Ahu Pātiki. As work continues across the rohe a more comprehensive picture of its treasures is emerging, and we are realising just how special a place it is. During the last year forty AT220 self-setting traps have been installed, along with a network of other more traditional traps. The process of installing these has meant staff have visited largely unexplored parts of the park. This voyage of discovery has highlighted the range and diversity of flora and fauna reasserting themselves now that grazing has ceased and pest control is underway.

Assisting Papatūānuku to heal the maunga is at the core of our kaupapa and continues to be our primary focus. The reality of this task can feel daunting, especially in the face of that sea of yellow gorse, which can look so dominant on the maunga. However it is deceptive, as the truly exciting evidence that our efforts are making a difference is visible in the understorey re-growth.

We know we still have lots of pests, unwanted weeds, and that the fight will be relentless, but to see positive improvements at such an early stage is encouraging.

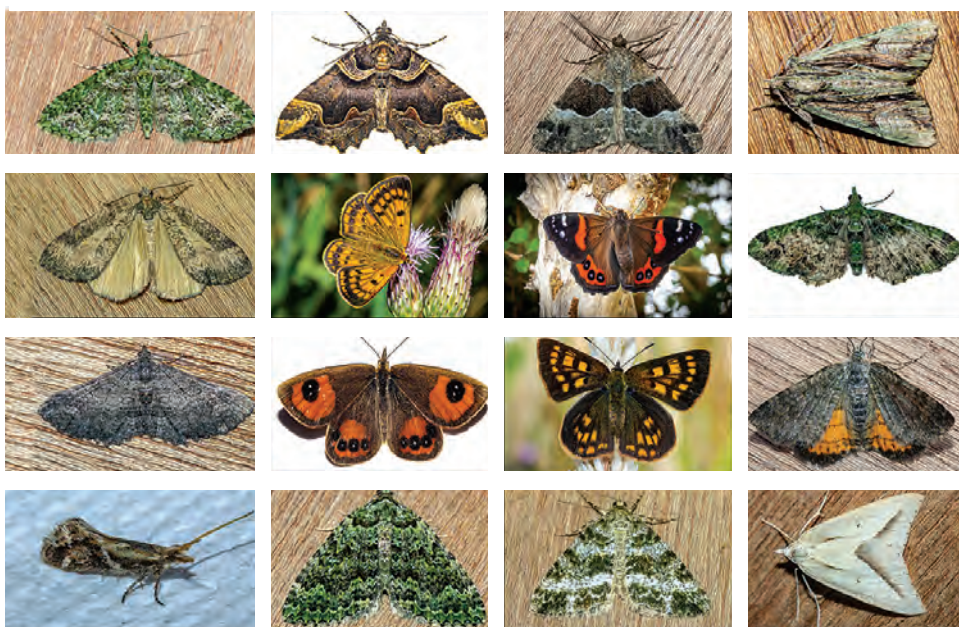
The Trust is continuing to build a picture of the biodiversity of species present within Te Ahu Pātiki. This research mahi is an essential tool that enables us to monitor the success of our restoration efforts, knowledge of what is present is key to measuring future improvements.



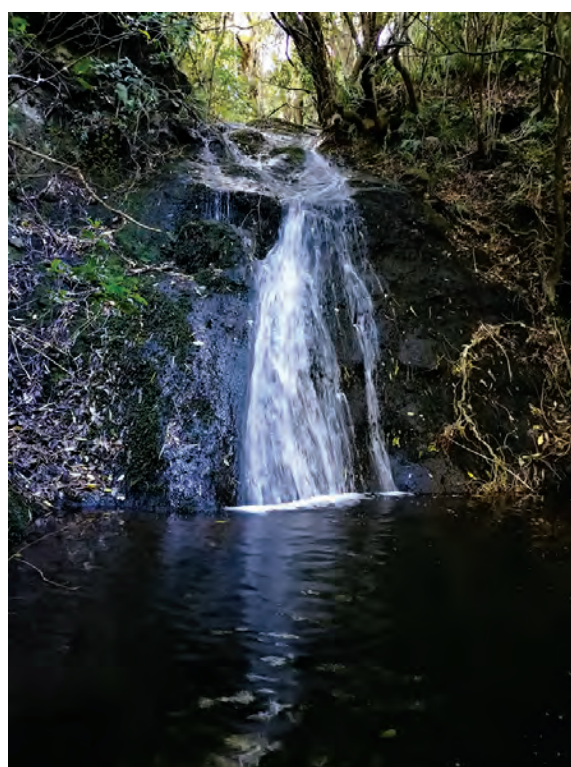
Regrowth in the Te Wharau stream catchment
Photo credit: Myles Mackintosh

During February 2024 a Lepidoptera (moths and butterflies) survey was undertaken by Lepidopterists Carey Knox and Shaun Murphy. Carey reported that approximately ... '132 species of summer-emergent Lepidoptera were recorded over two days and two nights – a very high diversity of Lepidoptera for a brief visit!'

This work was made possible through the Trust's inclusion in the QEII Jobs for Nature project for "Accelerating stewardship of threatened habitats/species in QEII Covenants in Eastern South Island".



Sample selection of moths
and butterflies found on Te Ahu Pātiki
Photos supplied by Carey Knox



Te Wharau stream
Photo credit: Myles Mackintosh

Projects

The next area identified for research is a comprehensive survey of the freshwater systems on Te Ahu Pātiki. If feasible, we hope to extend this survey to include the length of Te Wharau Stream. This will provide the community and the Trust with up to date data on the state of the waterways across the entire catchment, ki uta ki tai mountains to sea.

Fire is recognised as the greatest single risk to the successful regeneration of Te Ahu Pātiki. The Trust is keen to do everything within its power to avoid fire, but also to understand the risk.

We are collaborating with two of our neighbours, Orton Bradley Park and Tūpari so that a coordinated approach can be taken across all our conservation whenua, and most importantly we will share an understanding of the challenges. A Fire Risk Analysis Report has been commissioned from Tony Teeling of Integrated Consultancy Ltd. Tony is a wildfire behaviour specialist with over twenty years' experience in wildfire. Over the last few years he has provided wildfire consultancy to Government organisations and the private sector. This report has been made possible through funding from the Christchurch City Council Discretionary Response Fund.



Spanish heath dieback March 2024
Photo credit: Will Todhunter

The Trust is working to eradicate a pernicious invasion of Spanish heath on some extremely hard to access terrain on the escapements of Mt. Bradley. Due to the infestation locations this has required using a helicopter to tackle the problem. Spanish heath is an extremely invasive species and if left unchecked threatens to become the dominant species on Mt. Bradley. We are hoping to have severely knocked it back this season, but will be closely monitoring the areas of infestation and continuing to spray until we are confident it has been completely removed from an area that has very high ecological values. This eradication programme has been made possible through support from ECAN, Boffa-Miskell and Whaka-Ora Healthy Harbour, the Trust is extremely grateful for their support.

Pest Free Banks Peninsula

The Te Aho Pātiki Charitable Trust is now a signatory to the Pest Free Banks Peninsula MOU which is made up of 20 local organisations and agencies committed to ridding the Peninsula of invasive pests and allowing biodiversity to flourish.

The signing ceremony took place in late May 2024 at a PFBP Hui hosted at Wairewa Marae. Ungulates are a major concern across our portion of the Peninsula and we are working with our neighbours and PFBP to combat this problem. Unfortunately Kārā Track suffered serious damage from pigs over the summer. Remedial work to restore the track is scheduled for this summer as we are now reasonably confident that the number of pigs has been significantly lowered.

However, this is likely to be an ongoing battle.



Trap installation 2024
Photo credit: Myles Mackintosh

Promotional Events

We continue to participate in events that promote understanding and engagement with the whenua. We hosted two Banks Peninsula Walking Festival walks this season, both well attended and enjoyed. We also combined with veteran botanist extraordinaire Colin Muerk to lead a group through Te Ahu Pātiki to celebrate Citizen Science Day. On all three occasions the weather was perfect and the views amazing.

Collaboration and engagement is central to our kaupapa and to many organisations within the Peninsula community. Therefore we would like to take this opportunity to acknowledge the continued support the Trust receives from Crater Rim Ultra who donate a portion of their entry fees for the annual run to the Trust.

The Trust is always keen to take advantage of opportunities to spread the word about Te Ahu Pātiki and our plans for its restoration. We have commissioned a set of posters to use at events that are designed to capture attention and encourage questions and discussion. Kaituitui Sarah Anderson spent a wonderful, but windy, day trialling this concept at the Governors Bay Spring Fete. The posters certainly attracted attention and great conversations.



Citizen Science Day 2024
Photo credit: Colin Muerk

Information

The Te Ahu Pātiki specific walking pamphlet and map upgrade are now completed and include all the new track names. These have been gifted to the Trust by Te Hapū Ngāti Wheke and Te Rūnanga o Koukourarata, two of our founding partners. This is a significant piece of work that has taken time to develop, in collaboration with Graphic Designer Sue Mercer. Designed as a digital only pamphlet it can be downloaded and read via a phone or portable device, to enable ease of use while visiting the maunga.

The new maps and information pamphlet are available via the Trust's website www.teahupatiki.org under the Information tag > Maps and Location. All tracks on Te Ahu Pātiki are open all year round, including during lambing season and can be accessed via several options, please see the Trust website for details. Information > Lambing Information.



Updated map with new track names
Designer: Mercer Graphics

Communications: The Trust recognises the importance of communication and has set-up a website www.teahupatiki.org as well as social media platforms : <https://www.facebook.com/TeAhuPatiki>, <https://www.instagram.com/teahupatiki/> to use to promote the park and share news.

Board Members



The Board (Left to right):

Hugh Logan (Rod Donald Banks Peninsula Trust)

Co-Chair Sarah Wilson (Rod Donald Banks Peninsula Trust)

Hana Walton (Te Rūnanga o Kōkourarata)

Co-Chair Roy Tikao (Te Hapū o Ngāti Wheke)

Chris Glasson (Orton Bradley Park)

Tasman Turoa Gilles (Te Ahu Pātiki Trust)

Morag Butler (Te Ahu Pātiki Trust)

David Ferguson (Orton Bradley Park)

Founding Partners



Sponsors



Supporters



*The Trust would like to thank and acknowledge all the contributing photographers

Special thanks to: Sam Barrow for Cover and Contents Photos

Sue Mercer for Design of the Annual Report

Performance Report

Te Ahu Pātiki Charitable Trust
For the year ended 30 June 2024



Prepared by Smith & Jack Ltd



Contents

14	Compilation Report
15	Entity Information
17	Approval of Financial Report
18	Statement of Service Performance
20	Statement of Financial Performance
21	Statement of Financial Position
22	Statement of Cash Flows
23	Statement of Accounting Policies
24	Notes to the Performance Report

Compilation Report

Te Ahu Pātiki Charitable Trust

For the year ended 30 June 2024

Compilation Report to the Directors of Te Ahu Pātiki Charitable Trust.

Scope

On the basis of information provided and in accordance with Service Engagement Standard 2 Compilation of Financial Information, we have compiled the financial statements of Te Ahu Pātiki Charitable Trust for the year ended 30 June 2024.

These statements have been prepared in accordance with the accounting policies described in the Notes to these financial statements.

Responsibilities

The Trustees are solely responsible for the information contained in this financial report and have determined that the accounting policies used are appropriate to meet your needs and for the purpose that the financial statements were prepared.

The financial statements were prepared exclusively for your benefit. We do not accept responsibility to any other person for the contents of the financial statements.

No Audit or Review Engagement Undertaken

Our procedures use accounting expertise to undertake the compilation of the financial statements from information you provided. Our procedures do not include verification or validation procedures. No audit or review engagement has been performed and accordingly no assurance is expressed.

Independence

We have no involvement with Te Ahu Pātiki Charitable Trust other than for the preparation of financial statements and management reports and offering advice based on the financial information provided.

Disclaimer

We have compiled these financial statements based on information provided which has not been subject to an audit or review engagement. Accordingly, we do not accept any responsibility for the reliability, accuracy or completeness of the compiled financial information contained in the financial statements. Nor do we accept any liability of any kind whatsoever, including liability by reason of negligence, to any person for losses incurred as a result of placing reliance on this financial report.

Smith and Jack Chartered Accountants

Middleton, Christchurch

Dated: 12 September 2024



Entity Information

Te Ahu Pātiki Charitable Trust

For the year ended 30 June 2024

'Who are we?', 'Why do we exist?'

Legal Name of Entity

Te Ahu Pātiki Charitable Trust

Entity Type and Legal Basis

Registered Charity & Charitable Trust

Registration Number

CC60087

Entity's Purpose or Mission

- To uphold mana whenua values
- To ensure year-round public access
- To enable biodiversity restoration
- To protect the whenua

The Te Ahu Pātiki Charitable Trust is the kaitiaki (guardian, manager) of the Te Ahu Pātiki Park, 500 hectares of culturally and ecologically significant whenua encompassing two of the highest peaks in Te Pataka o Rakaihautū Bank Peninsula. The Trust was formed in March 2022 and registered as a Charitable Trust in April 2022. The transfer of full responsibility for the Park was officially finalised with the transfer of the sale & purchase agreement on September 5th, 2022.

The Trust's responsibilities are enshrined in its three core founding documents:

- The Te Ahu Pātiki Charitable Trust Deed
- The Te Ahu Pātiki QE11 Covenant Agreement
- The Herenga ā Nuku (Walking Easement NZ) Agreement

Entity Structure

Governance: The Te Ahu Pātiki Charitable Trust Board structure allows for a maximum of nine members. Two appointments are assigned to Rod Donald Bank Peninsula Trust Board, two to Orton Bradley Park Trust Board and one each to Te Hapū o Ngāti Wheke and Te Rūnanga o Kōkōurā. These positions acknowledge the importance of the Trust's founding partners. The remaining three positions are appointed at the discretion of the Te Ahu Pātiki Board. The maximum term any board member can serve is three years and the total number of terms allowed is three.

Operational: The Board employs a Kaituitui, this position is part-time and is responsible for all the coordination and administrative tasks required for the Trust to operate. The Trust has a maintenance contract with Orton Bradley Park for track, weed and core pest control work. Specialised work in pest, track and weed maintenance is also sought as required by the Te Ahu Pātiki Board. The Trust also contracts professional advice as required.

Entity Information

Main Sources of Entity's Cash and Resources

Sponsorship – The Trust receives sponsorship support from MacPac and from LPC (Lyttleton Port Company)

Grants – The Trust has received grant support from ECAN, CCC, QE11 and Herenga ā Nuku

Donations – The Trust accepts donations, but income from this source is anticipated to be limited

ETS Scheme – The Trust has 58 hectares of permanent indigenous forest registered in the Emissions Trading Scheme. Income from this source is anticipated in future years

Investments – Interest earning term deposits of \$300,000

Main Methods Used by Entity to Raise Funds

The Trust does not currently engage in fundraising activities.

Entity's Reliance on Volunteers and Donated Goods or Services

All the trustees are volunteers. The Trust also relies on the goodwill of many within the conservation community for advice and assistance as required. The Trust also receives significant discounts from suppliers from time to time.

Physical Address

355 Charteris Bay Road, Diamond Harbour



Approval of Financial Report

Te Ahu Pātiki Charitable Trust

For the year ended 30 June 2024

The Trustees are pleased to present the approved financial report including the historical financial statements of Te Ahu Pātiki Charitable Trust for year ended 30 June 2024.

APPROVED

A handwritten signature in blue ink, appearing to read 'Roy Tikao', written over a horizontal line.

Trustee Roy Tikao

Date 25/10/2024

A handwritten signature in blue ink, appearing to read 'Sarah Wilson', written over a horizontal line.

Trustee Sarah Wilson

Date 25/10/2024

Statement of Service Performance

Te Ahu Pātiki Charitable Trust

For the year ended 30 June 2024

Description of Entity's Outcomes

The focus of 2022 was to establish our legal requirements as a trust and develop our operational framework. The focus of 2023 was on implementing comprehensive pest and weed control programmes, maintaining the park's track network to a high standard and working closely with mana whenua to develop a management plan that encompasses the Trust's core values of year-round public access, biodiversity restoration and protection of the whenua.

Key outcomes since the Trust was established include:

July 2023 - June 2024

- Purchased 40 x AT220 traps
- 237 traps installed across Te Ahu Pātiki, 29 in 2022, 58 in 2023 and 150 in 2024. Trap network comprised of 72 x Sentinel (possum), 21 x Trapinator (possum), 72 x DOC200 (stoat, weasel, hedgehog, rat), 31 x DOC250 (ferret, stoat, weasel, hedgehog, rat), 40 x AT220 (possum, rat, mouse, cat, ferret, stoat, weasel), 1 x Timms (cat)
- Catch data total July 2024 - 1344. Comprising of 953 x possum, 223 x unspecified (mostly rats and mice), 72 x hedgehog, 60 x rat, 21 x mouse, 8 x stoat, 4 x weasel, 3 x cat,
- The first phase of the Spanish Heath elimination spray programme was completed. Made possible through funding from ECAN and Whaka-ora Healthy Harbours.
- Comprehensive Fire Risk Analysis Report commissioned, funded with a grant from CCC
- Lepidoptera (Moths and Butterflies) Survey completed, made possible through inclusion in the QEII Jobs for Nature project for Accelerating stewardship of threatened habitats/species in QEII Covenants in Eastern South Island.
- Improvements and repairs completed on Harakeke Track
- Management Plan development (ongoing)
- The new track names launched
- A Te Ahu Pātiki specific walking pamphlet developed and published. Includes the new track names, and upgraded maps.
- 2 x Newsletters published
- Public engagement - Governors Bay Fete, Banks Peninsula Walking Festival, Crater Rim Ultra, Citizens Science Day
- On-going basic pest, weed control and track maintenance work – 416 hours

July 2022 - June 2023

- Commissioned logo, established social media platforms
- Maintained track maintenance to comply with Herenga ā Nuku requirement to keep 8 gazetted tracks well maintained and open to the public – totalling 13.3 kilometres of track
- Official handover from the Rod Donald Banks Peninsula Trust to Te Ahu Pātiki Trust September 2022
- Funded track extension to facilitate pest control operations
- Maintained relationships with sponsors & grant providers



Statement of Service Performance

- Continued to build relationships with neighbours and Whakaraupō conservation groups
- Formal celebration of the launch of Te Ahu Pātiki
- Launched website
- Established publication of 6 monthly newsletters (distributed via email and linked to the Trust website & Social Media platforms)
- Set up donation portal on the trust website
- Registration transfer of 58H indigenous permanent forest in the Emission Trading Scheme to Te Ahu Pātiki Charitable Trust
- Restoration Plan approved by mana whenua
- Initiated discussion about commissioning fire mitigation plan
- Management Plan and Health & Safety Plans in progress
- Completed stock proof fencing of the park in compliance with QE11 Covenant requirements – representing approximately 15 km of new or improved fencing
- Facilitated two hui to workshop the ecological survey and provide opportunity for mana whenua input.
- Recruited new Trustees with emphasis on gathering skills in ecology, mātauranga māori and funding
- Completion and Implementation of Restoration Plan & recommendations
- On-going pest, weed control and track maintenance work – 440 hours

Statement of Financial Performance

Te Ahu Pātiki Charitable Trust
For the year ended 30 June 2024

'How was it funded?' and 'What did it cost?'

	NOTES	2024	2023
Revenue			
Donations, fundraising and other similar revenue	1	30,997	1,688,778
Revenue from providing goods or services	1	60,015	60,000
Interest, dividends and other investment revenue	1	9,446	9,452
Total Revenue		100,458	1,758,229
Expenses			
Costs related to providing goods or service	2	121,741	136,493
Other expenses	2	6,843	5,290
Total Expenses		128,584	141,783
Surplus/(Deficit) for the Year		(28,127)	1,616,446

This statement has been prepared without conducting an audit or review engagement, and should be read in conjunction with the attached Compilation Report.

Statement of Financial Position

Te Ahu Pātiki Charitable Trust

For the year ended 30 June 2024

'What the entity owns?' and 'What the entity owes?'

	NOTES	30 JUN 2024	30 JUN 2023
Assets			
Current Assets			
Bank accounts and cash	3	214,712	48,685
Debtors and prepayments	3	2,510	5,242
Total Current Assets		217,222	53,927
Non-Current Assets			
Land	5	1,231,463	1,231,463
Property Improvements and Equipment	5	50,103	38,332
Investments - Term Deposits	3	130,000	303,742
Total Non-Current Assets		1,411,566	1,573,537
Total Assets		1,628,788	1,627,465
Liabilities			
Current Liabilities			
Creditors and accrued expenses	4	23,540	11,018
Unused donations and grants with conditions		16,928	-
Total Current Liabilities		40,468	11,018
Total Liabilities		40,468	11,018
Total Assets less Total Liabilities (Net Assets)		1,588,320	1,616,446
Accumulated Funds			
Accumulated surpluses or (deficits)	6	1,588,320	1,616,446
Total Accumulated Funds		1,588,320	1,616,446

This statement has been prepared without conducting an audit or review engagement, and should be read in conjunction with the attached Compilation Report.

Statement of Cash Flows

Te Ahu Pātiki Charitable Trust
For the year ended 30 June 2024

	2024	2023
Cash Flows from Operating Activities		
Donations, fundraising and other similar receipts	42,800	471,979
Receipts from providing goods or services	79,017	69,000
Interest, dividends and other investment receipts	14,688	4,210
GST	(1,264)	(12,706)
Payments to suppliers and employees	(126,493)	(141,357)
Total Cash Flows from Operating Activities	8,748	391,126
Cash Flows from Investing and Financing Activities		
Receipts from sale of property, plant and equipment	-	3,322
Receipts from sale of investments	318,182	-
Payments to acquire property, plant and equipment	(16,464)	(42,020)
Payments to purchase investments	(144,440)	(303,742)
Total Cash Flows from Investing and Financing Activities	157,279	(342,441)
Net Increase/(Decrease) in Cash	166,027	48,685
Bank Accounts and Cash		
Opening cash	48,685	-
Net change in cash for period	166,027	48,685
Closing cash	214,712	48,685

This statement has been prepared without conducting an audit or review engagement, and should be read in conjunction with the attached Compilation Report.

Statement of Accounting Policies

Te Ahu Pātiki Charitable Trust

For the year ended 30 June 2024

'How did we do our accounting?'

Basis of Preparation

The entity has elected to apply PBE SFR-A (NFP) Public Benefit Entity Simple Format Reporting - Accrual (Not-For-Profit) on the basis that it does not have public accountability and has total annual expenses equal to or less than \$2,000,000. All transactions in the Performance Report are reported using the accrual basis of accounting. The Performance Report is prepared under the assumption that the entity will continue to operate in the foreseeable future.

Goods and Services Tax (GST)

The entity is registered for GST. All amounts are stated exclusive of goods and services tax (GST) except for accounts payable and accounts receivable which are stated inclusive of GST.

Revenue

Grants and sponsorship are recognised as Revenue in the year they fulfil any attached conditions. Where there are no conditions attached they are recognised on receipt.

Donations are shown in Revenue when received.

Interest is recorded as Revenue when it is earned.

Revenue relating to carbon credits is recognised when available credits are sold through the Emissions Trading Scheme.

Land

Land is recorded at cost. Cost price has been determined as the amount paid by Rod Donald Banks Peninsula Trust to purchase the land from private ownership and any associated capitalised costs of the purchase. The land was transferred to Te Ahu Pātiki ownership.

Income Tax

Te Ahu Pātiki Charitable Trust is wholly exempt from New Zealand income tax having fully complied with all statutory conditions for these exemptions.

Bank Accounts and Cash

Bank accounts and cash in the Statement of Cash Flows comprise cash balances and bank balances.

Changes in Accounting Policies

This is the first year of operations for the Trust.

Notes to the Performance Report

Te Ahu Pātiki Charitable Trust
For the year ended 30 June 2024

	2024	2023
1. Analysis of Revenue		
Donations, fundraising and other similar revenue		
Land transferred to Trust	-	1,231,463
Startup Donations (Incl remainder of Crowd Funded donations)	-	354,796
Donations	1,425	2,865
Grants	29,572	99,654
Total Donations, fundraising and other similar revenue	30,997	1,688,778
Revenue from providing goods or services		
Sales	15	-
Sponsorship	60,000	60,000
Total Revenue from providing goods or services	60,015	60,000
Interest, dividends and other investment revenue		
Interest Income	9,446	9,452
Total Interest, dividends and other investment revenue	9,446	9,452
	2024	2023

2. Analysis of Expenses

Costs related to providing goods or services		
Advertising	360	341
Bank Fees	-	8
Computer Consumables	12	92
Ecological Survey	-	30,378
Fence Maintenance	-	8,985
General Expenses	2,791	2,000
Insurance	3,835	-
Kaituitui	35,180	39,882
Office & Admin Expenses	2,270	1,351
Pest Control	17,078	9,861
Printing & Stationery	732	681
Events/Branding/Graphics/Social Media	11,271	11,793
Rates	-	-
Repairs and Maintenance other	748	1,365
Track Maintenance	8,221	13,212
Travel /Mileage	1,314	-
Website	446	409
Weed Control	37,483	16,135
Total Costs related to providing goods or services	121,741	136,493
Other expenses		
Accounting Costs	2,150	2,000
Depreciation	4,693	650

Notes to the Performance Report

Legal expenses	-	2,640
Total Other expenses	6,843	5,290

2024 2023

3. Analysis of Assets

Bank accounts and cash

Debit Card Account	588	732
Working Account	33,400	47,953
Call Account	180,724	-
Total Bank accounts and cash	214,712	48,685

Debtors and prepayments

Interest Accrual	-	5,242
Prepayments	2,510	-
Total Debtors and prepayments	2,510	5,242

Other current assets

SBS Investment 6-1-736706	130,000	-
SBS Investment 2-9-736706	-	153,742
SBS Investment 3-7-736706	-	100,000
SBS Investment 4-5-736706	-	50,000
Total Other current assets	130,000	303,742

2024 2023

4. Analysis of Liabilities

Creditors and accrued expenses

Accounts Payable	23,283	10,158
GST	(1,977)	(1,140)
Sundry Creditor accruals	2,234	2,000
Total Creditors and accrued expenses	23,540	11,018

2024 2023

5. Property, Plant and Equipment

Land

Land at cost	1,231,463	1,231,463
Total Land	1,231,463	1,231,463

Property Improvements and Equipment

Opening Book Value	38,332	-
Additions	16,464	38,982
Disposals	-	-
Depreciation	4,693	650
Closing Book Value	50,103	38,332

	2024	2023
6. Accumulated Funds		
Accumulated Funds		
Opening Balance	1,616,446	-
Current year surplus / (deficit)	(28,127)	1,616,446
Total Accumulated Funds	1,588,320	1,616,446
Total Accumulated Funds	1,588,320	1,616,446

7. Commitments

There are no commitments as at 30 June 2024 (Last year - nil).

8. Contingent Liabilities and Guarantees

There are no contingent liabilities or guarantees as at 30 June 2024 (Last year - nil).

9. Carbon Credits

At 30 June 2024 the Trust was registered with the Emissions Trading Scheme and held 510 ETS Carbon Units.

(2023: The Trust gained registration with the Emissions Trading Scheme in January 2023 for 58 hectares of indigenous forest located within the property. As previously agreed the initial credits granted on entry to the scheme were transferred to the lands previous private owners, who spent considerable time and cost registering the land under the scheme on behalf of Te Ahu Pātiki Trust.

At 30 June 2023 it had no available Carbon Credits.)

10. Related Parties

There were no transactions involving related parties during the financial year. (Prior year: nil)

11. Events After the Balance Date

There were no events that have occurred after the balance date that would have a material impact on the Performance Report (Last year - nil).

12. Ability to Continue Operating

The entity will continue to operate for the foreseeable future.

