

BPNFCCG Bulletin 6

August 2024 – Prepared by Rowan Sprague and Penny Carnaby

1 Group update

Following our May meeting with Rod Carr, we have formed a sub-group focused on developing ideas for a voluntary biodiverse carbon programme specific for Banks Peninsula. This sub-group has the following members: Clayton Wallwork, Pip Newland, Tim McIntosh, Larry Burrows, Rowan Sprague, Mark Nixon, Antony Johnson, Paul Dahl, Maree Burnett, and Mark Christensen. We have started drafting the principles of a voluntary biodiverse carbon programme. Please email bpnfccg@gmail.com if you are keen to join this sub-group.

2 In the news

Akaroa Volunteer Fire Brigade and Banks Peninsula Rural Fire Brigade's submission to CCC's Long Term Plan: In their submission to the CCC's Long Term Plan in May, the Akaroa Volunteer Fire Brigade and the Banks Peninsula Rural Fire Brigade asked for support for volunteer firefighters. In their submission, they state that according to an estimate, Banks Peninsula forest cover has increased by over 7% in the past two decades, adding fuel. They requested that CCC considers and prioritises investing in increasing cumulative water storage capacity at multiple strategic locations on the peninsula to make communities resilient. Please see [their submission](#) for more information.

Government cancels annual ETS charge for forestry: The government [announced in June](#) that it has cancelled this year's annual service charges for forestry registered in the Emissions Trading Scheme. The annual service charge was introduced last year and was set \$30.25/ hectare.

The Recloaking of Banks Peninsula/Te Pātaka o Rākaihautū: [This video](#) tells the story of the deforestation of Te Pātaka o Rākaihautū (Banks Peninsula) but also the reforestation of some of the southern coast through a ten-year partnership between Wairewa Rūnanga and Orion New Zealand. If you haven't already seen this video, we highly recommend watching it!

Carbon storage of buried kelp: A [recent article in The Conversation](#) discusses how buried kelp in deep oceans is storing more carbon than we had originally thought. The article states that, "two new studies show coastal vegetation such as seaweed forests are more important to natural carbon storage than we thought. Around 56 million tonnes of carbon in the form of seaweed is carried into the deep ocean each year... This phenomenon is particularly high in the kelp forests of Australia's Great Southern Reef, which stretches 8,000 km from Kalbarri in Western Australia to Coolangatta in Queensland. The seaweed forests of the United States, New Zealand, Indonesia and Chile are also carbon transport hotspots." While the BPNFCCG focuses on native forest carbon storage, it is interesting to read about other forms of carbon storage which provide additional ecosystem services similar to native forests, such as habitat provision and biodiversity.

Pure Advantage recently released its latest newsletter, which has more information about its Recloaking Papatūānuku initiative and its 10 asks of the government: <https://pureadvantage.cmail20.com/t/r-e-tdjyky-ohyutpjk-lji/>

3 Government work in progress relevant to group

3.1 Government released its draft Second Emissions Reduction Plan (ERP2)

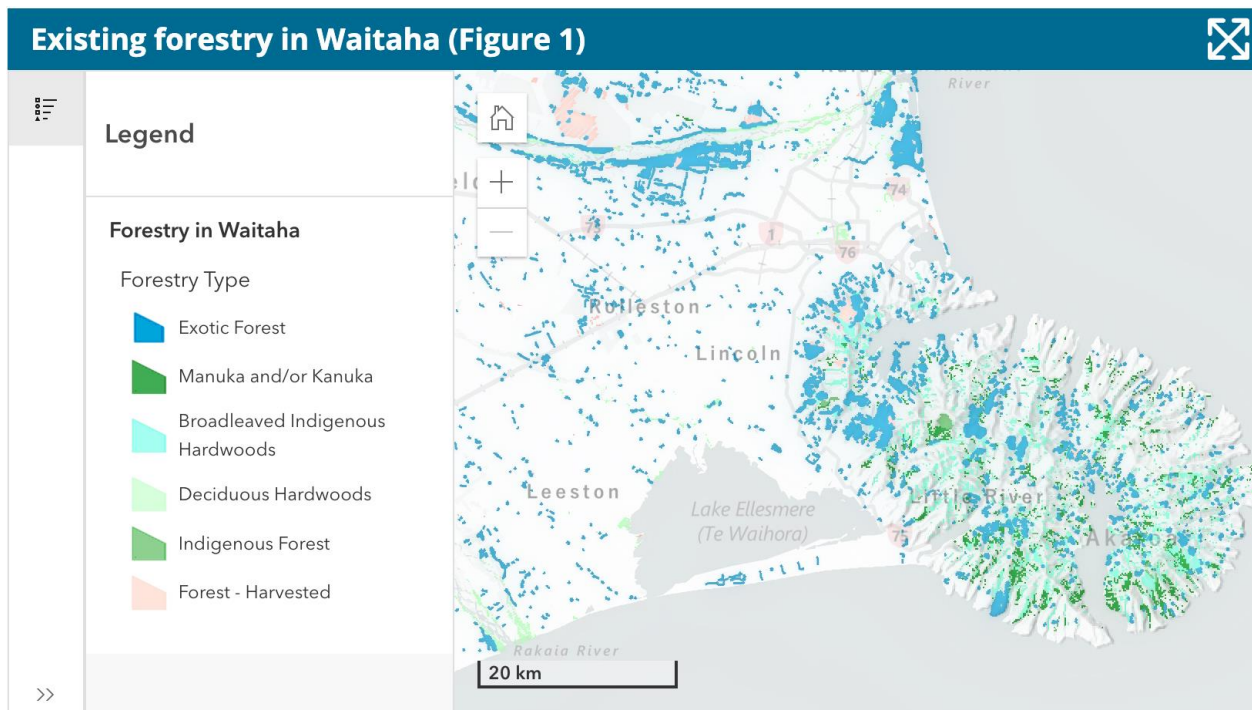
In [this draft plan](#), the government has said that it is taking a ‘net-based approach’ to balancing emissions reductions and removals. The plan covers the emission budget for 2026 to 2030, and the final version of the plan will be published before the end of 2024. In the draft plan, the government states that emissions pricing, and the NZ Emissions Trading Scheme in particular, will play a central role in NZ’s climate change response. The government’s proposed approach is to use emissions pricing to drive net emissions reductions where it is most effective to do so. Consultation on this draft plan is open until 21 August.

4 Submissions lodged and upcoming

The BPNFCC group has drafted a submission to the government’s [draft second Emissions Reduction Plan \(ERP2\)](#) and is seeking feedback on this. We will submit on behalf of the group on 21 August.

5 Environment Canterbury’s view on the role of forestry in offsetting emissions

Environment Canterbury explains [their views on forestry’s role](#). They state that forestry has a part to play in offsetting the emissions from sectors that cannot easily reduce or remove their emissions. ECan has also provided a map of existing forestry in Waitaha/ Canterbury (screenshot of map below). More information can be found at the link above.



6 19 August meeting

- Duncan Ensor, Director of Verity Nature NZ, will give a short presentation to the group at our August meeting about Verity Nature's voluntary carbon and biodiversity programme. The BPNFCCG's sub-group on a Horomaka biodiverse carbon programme will also give an update on our progress to date. This meeting will be from 4-6pm at Te Hāpua Halswell Library in the Piharau room.
- Our final meeting of the year will be on 18 November from 4-6pm at Te Hāpua Halswell Library.

7 Standing information

- BPNFCCG relevant documents, meeting minutes, and submissions are saved in our Google drive [here](#).

Table 1 Group membership

Name	Organisation and role
Adrian Loo	Forever Forests Co-Founder & Director
Alice Shanks	QEII National Trust Central Canterbury Advisor – attending to represent QEII
Alina Toppler	ECAN Climate Change & Community Resilience
Anthony Johnson	Manager Oashore conservation project 540ha, landowner of Hukahukatuaroa in Western Valley
Bob Webster	Landowner Waipuna Bush, former Rod Donald Banks Peninsula Trust Trustee
Brent Martin	Manaaki Whenua Senior Data Scientist
Bruce Hansen	Maurice White Native Forest Trust Trustee (Hinewai)
Bryan Storey	Te Pātaka o Rākaihautū Geopark Trustee, former Rod Donald Banks Peninsula Trust Trustee
Clayton Wallwork	Orion Sustainability Manager
Di Lucas	Lucas Associates Director, Landscape Architect
Helen Greenep	Environment Canterbury Biodiversity Officer
James Wright	BPCT Farm Biodiversity Programme
Josh Foster	BPCT Farm Biodiversity Programme
Kaitlyn Leeds	Department of Conservation Banks Peninsula ranger
Karen Banwell	Retired Whaka Ora Programme Manager
Kirsty Brennan	Lyttelton Port Company
Lan Pham	Green Party MP
Larry Burrows	Manaaki Whenua Forest Ecologist
Maree Burnett	Banks Peninsula Conservation Trust Manager
Mark Christensen	Chair of the Project Oversight Group for Pest Free Banks Peninsula, Director of EcoCentral Limited, and Director of the state-owned enterprise Animal Control Products (Orillion)
Mark Nixon	Landowner with High Bare Peak group (500ha) in Little River, Tūpari (400ha) in Kaituna and Putaweta (40ha) above Akaroa
Morag Butler	ECAN Climate Change & Community Resilience leader
Nick Butcher	Carbon Crop Chief Technology Officer. Founder of Carboncrop
Nick Head	Christchurch City Council Senior Ecologist
Pam Richardson	BP Branch Federated Farmers, Former BP Community Board Chair and BP Conservation Trust Trustee
Paul Dahl	Landowner in Purau, Hidden Valley Trust in Purau and on Whaka Ora.
Paula Jameson	President Summit Rd Society
Penny Carnaby	Chair BPNFCCG, representative of Banks Peninsula Conservation Trust
Piper Pengelly	Representative from Rod Donald Banks Peninsula Trust
Richard Simpson	Banks Peninsula Conservation Trust Trustee and Landowner
Rowan Sprague	BPNFCCG Secretary, Science Knowledge Broker at Manaaki Whenua – Landcare Research
Sam Mander	Agri Intel Carbon specialist

Sarah Helleur	Forever Forests Consultant. ETS consulting indigenous opportunities
Shelley Washington	Rod Donald Banks Peninsula Trust manager
Suky Thompson	Former Rod Donald Banks Peninsula Trust manager
Tasman Gillies	Te Ahu Pātiki Trust
Tina Troup	Maurice White Native Forest Trust Trustee (Hinewai), BPCT Covenanting committee