

# BPNFCCG Bulletin 5

May 2024 – Prepared by Rowan Sprague and Penny Carnaby

## 1 Group update

Rowan has taken over from Suky Thompson as the group's secretary – big thank-you to Suky for her work helping set this group up and run it!

We also have a new email address for the group: [bpnfccgroup@gmail.com](mailto:bpnfccgroup@gmail.com)

Finally, our group has formalised our relationship and funding from the Rod Donald Trust. The Rod Donald Trust has agreed to continue to support the BPNFCCG and fund us for up to \$2000 per year to cover meeting room booking fees and event costs. Please see the letter at the end of this Bulletin about their support.

## 2 In the news

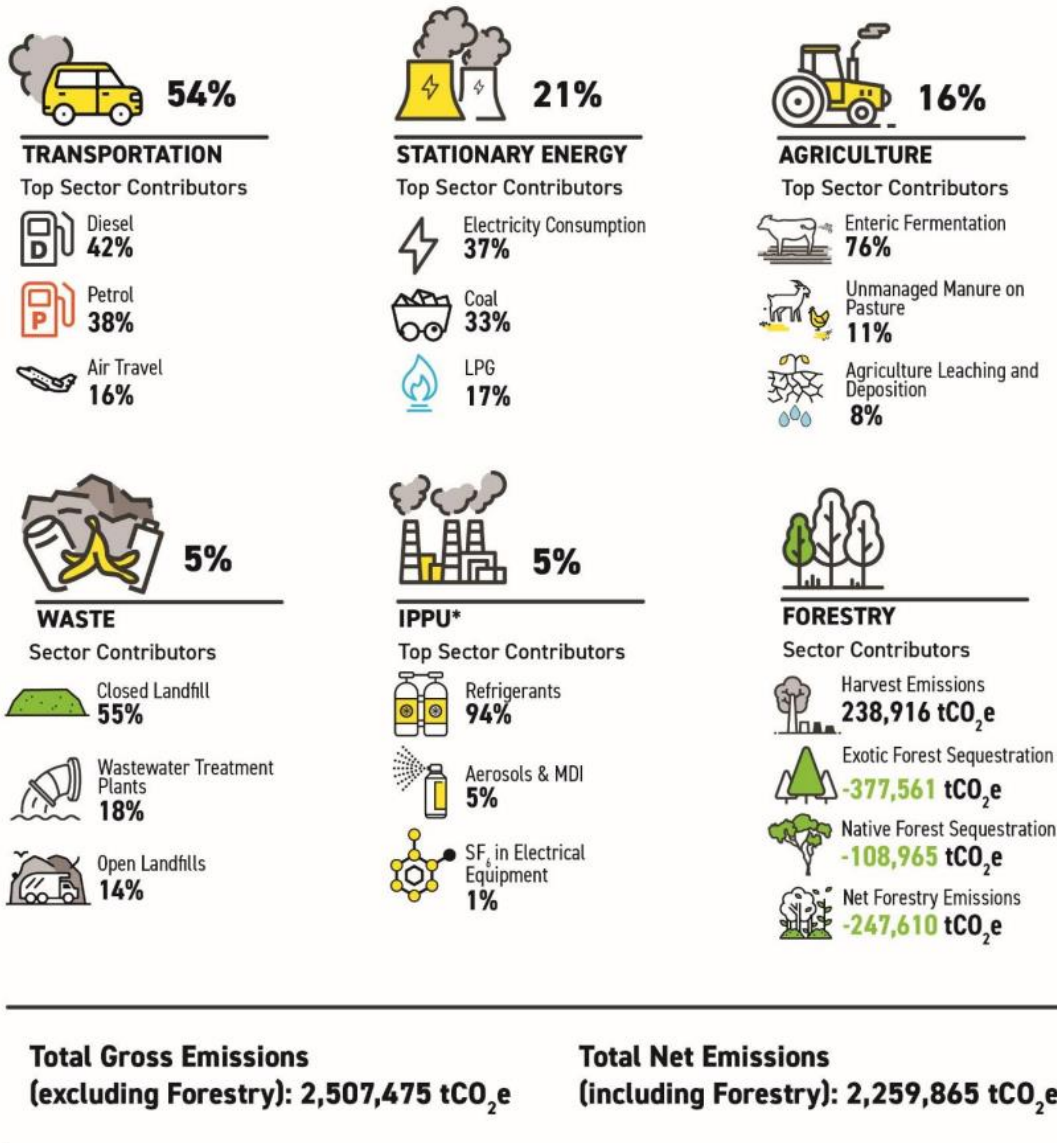
**Resources from Farming with Native Biodiversity to help manage biodiversity on farms:** The team at Farming with Native Biodiversity have developed and compiled resources to provide practical and clear information on how to improve the biodiversity on farms and make it viable for each farm's unique pastoral farm system. Find their resources here: <https://www.biodiversity.nz/resources>

**Plan to 'grow the lungs of Christchurch' almost at halfway stage:** Since 2021, groups part of Te Kāhahu Kahukura have planted over 4000 totara trees in the Podocarp Enrichment Programme, and their goal is to plant 10,000 in the Southern Port Hills. Read more here: [Plan to 'grow the lungs of Christchurch' almost at halfway stage | Star News \(odt.co.nz\)](https://www.starnews.co.nz/news/plan-to-grow-the-lungs-of-christchurch-almost-at-halfway-stage)

Pure Advantage recently released its latest newsletter, which has more information about its Recloaking Papatūānuku initiative and latest submissions: <https://pureadvantage.cmail19.com/t/r-e-tihrbht-ohyutpjkj-jh/>

**Christchurch's Greenhouse Gas Emissions in 2022-2023:** Christchurch City Council recently released a report on Christchurch's Greenhouse Gas Emissions in the 2023 financial year. The report shows a general trend where gross emissions are decreasing but are not yet on track to meet the Council's target of net zero greenhouse emissions, excluding methane, by 2045. The figure below shows a summary of the emissions inventory for 2022-2023, and read more here: <https://newsline.ccc.govt.nz/news/story/latest-greenhouse-gas-emissions-report-released-for-christchurch>

# Ōtautahi Christchurch Greenhouse Gas Emissions Inventory 2023



\*IPPU = Industrial Processes and Product Use

Figure

2 from Ōtautahi Christchurch Greenhouse Gas Emissions Inventory, FY23 report. Read the full report [here](#).

**Canterbury's Greenhouse Gas Emissions for 2018 and 2021:** Environment Canterbury also released a greenhouse gas emissions inventory for 2018 and 2021. This is the first greenhouse gas emissions inventory for Canterbury, and the report found that the source of greenhouse gas emissions included agriculture, stationary energy, and transportation. The full report is available [here](#).

### **3 Government work in progress relevant to group**

#### **3.1 Environment Canterbury and Christchurch City Council's Long Term Plans**

Consultations for both of these Long Term Plans were due in April. In ECan's LTP, they consulted on a targeted rate of \$1M for biodiversity work in Christchurch and Banks Peninsula. About the rate, ECan says, "This targeted rate would pay for a ring-fenced programme of work, that would see landscape-scale indigenous biodiversity outcomes enhanced in the district. This would be in addition to the work carried out under the regional rate, which is already included in the options. The new targeted rate would be used to focus on doing more work with the community and local groups to protect priority habitats across freshwater, coastal and land-based ecosystems in the Christchurch district."

#### **3.2 Government commissioned independent review of ETS forestry costs**

In February, the Government [announced an independent review of ETS forestry costs](#). The review was expected to take six weeks, and a report is due back soon.

#### **3.3 Climate Change Commission's advice to government on ETS auction settings**

In March, the Climate Change Commission [released its advice](#) to Government on the ETS settings. In its advice, it urged the Government to cut the carbon credit surplus, since the large surplus of carbon credits could make it difficult for NZ to meet its carbon emissions targets. It also cautioned that the ongoing uncertainty in the ETS market was risking investment confidence and that the Government needs to outline its plans for other policies to make up for the ETS's limitations. Read more about the Climate Change Commission's advice [here](#).

### **4 Submissions lodged and upcoming**

The BPNFCC group has not made any submissions since the last bulletin.

### **5 Update from Beef + Lamb on their ETS advocacy plans**

The following is an update from Beef + Lamb NZ about their ETS advocacy plans:

Beef + Lamb NZ is advocating to Government to have more on-farm forests be able to receive carbon credits. These credits would be generated as a result of additional management (like fencing or pest control) occurring within the native bush. Getting these credits by the ETS is a few years down the line but there is an opportunity to participate in the voluntary carbon markets as well. There are a number of companies working in this space (separate to the Emissions Trading Scheme) that Beef + Lamb NZ can also recommend.

## **6 20 May meeting**

- Rod Carr, Chair of He Pou a Rangi Climate Change Commission, will attend the group's May meeting to discuss emissions trading and emissions reduction plans. This meeting will be from 3:30-5:30pm at Te Hāpua Halswell Library in the Piharau room.
- After our 20 May meeting, our next meetings will be on 19 August and 18 November from 4-6pm at Te Hāpua Halswell Library.

## **7 Standing information**

- BPNFCCG relevant documents, meeting minutes, and submissions are saved in our Google drive [here](#).

**Table 1 Group membership**

<b>Name</b>	<b>Organisation and role</b>
<b>Adrian Loo</b>	Forever Forests Co-Founder & Director
<b>Alice Shanks</b>	QEII National Trust Central Canterbury Advisor – attending to represent QEII
<b>Alina Toppler</b>	ECAN Climate Change & Community Resilience
<b>Anthony Johnson</b>	Manager Oashore conservation project 540ha, landowner of Hukahukatuaroa in Western Valley
<b>Bob Webster</b>	Landowner Waipuna Bush, former Rod Donald Banks Peninsula Trust Trustee
<b>Brent Martin</b>	Manaaki Whenua Senior Data Scientist
<b>Bruce Hansen</b>	Maurice White Native Forest Trust Trustee (Hinewai)
<b>Bryan Storey</b>	Te Pātaka o Rākaihautū Geopark Trustee, former Rod Donald Banks Peninsula Trust Trustee
<b>Clayton Wallwork</b>	Orion Sustainability Manager
<b>Di Lucas</b>	Lucas Associates Director, Landscape Architect
<b>Helen Greenep</b>	Environment Canterbury Biodiversity Officer
<b>James Wright</b>	BPCT Farm Biodiversity Programme
<b>Josh Foster</b>	BPCT Farm Biodiversity Programme
<b>Kaitlyn Leeds</b>	Department of Conservation Banks Peninsula ranger
<b>Karen Banwell</b>	Retired Whaka Ora Programme Manager
<b>Kate Lindsay</b>	QEII National Trust Policy Advisor
<b>Lan Pham</b>	Green Party MP
<b>Larry Burrows</b>	Manaaki Whenua Forest Ecologist
<b>Maree Burnett</b>	Banks Peninsula Conservation Trust Manager
<b>Mark Nixon</b>	Landowner with High Bare Peak group (500ha) in Little River, Tūpari (400ha) in Kaituna and Putaweta (40ha) above Akaroa
<b>Morag Butler</b>	ECAN Climate Change & Community Resilience leader
<b>Nick Butcher</b>	Carbon Crop Chief Technology Officer. Founder of Carboncrop
<b>Nick Head</b>	Christchurch City Council Senior Ecologist
<b>Pam Richardson</b>	BP Branch Federated Farmers, Former BP Community Board Chair and BP Conservation Trust Trustee
<b>Paul Dahl</b>	Landowner in Purau, Hidden Valley Trust in Purau and on Whaka Ora.
<b>Paula Jameson</b>	Summit Road Society
<b>Penny Carnaby</b>	Chair BPNFCCG, Banks Peninsula Conservation Trust Chair
<b>Richard Simpson</b>	Banks Peninsula Conservation Trust Trustee and Landowner
<b>Rowan Sprague</b>	BPNFCCG Secretary, Science Knowledge Broker at Manaaki Whenua – Landcare Research
<b>Sam Mander</b>	Agri Intel Carbon specialist
<b>Sarah Helleur</b>	Forever Forests Consultant. ETS consulting indigenous opportunities
<b>Shelley Washington</b>	Rod Donald Banks Peninsula Trust manager
<b>Suky Thompson</b>	Former Rod Donald Banks Peninsula Trust manager
<b>Tasman Gillies</b>	Te Ahu Pātiki Trust
<b>Tina Troup</b>	Maurice White Native Forest Trust Trustee (Hinewai), BPCT Covenanting committee

9 April 2024

Kia Ora Rowan,

**Banks Peninsula Native Forest Climate Change Group – support from Rod Donald Banks Peninsula Trust**

The Rod Donald Banks Peninsula Trust passed a resolution at its 14 February 2023 Board meeting agreeing that *'a budget of \$2,000 per annum be set aside to support the group for room hire, refreshments, events and other miscellaneous costs.'*

The Rod Donald Banks Peninsula Trust is also happy to assist with background administration that relates to booking meeting venues and paying associated costs for room and catering. Please contact Sue Church, our Trust Administrator, whenever you require assistance with the expenses and background administration.

Thank you Rowan for agreeing to coordinate this group and we are pleased Penny Carnaby has agreed to remain the Chairperson. We also thank Suky Thompson for her long commitment to mahi to coordinating this group until now. Our Trust is grateful for the efforts of this group and the contribution it makes towards biodiversity on Banks Peninsula.

Yours sincerely



Shelley Washington

Trust Manager / Manahautū