

# Rod Donald Banks Peninsula Trust

2020–2030

## Selwyn District Council Annual Plan 2020-21 submission

Presentation by  
Suky Thompson  
Rod Donald Banks Peninsula Trust Manager  
[manager@roddonaldtrust.co.nz](mailto:manager@roddonaldtrust.co.nz)  
June 3, 2020



# Introducing Rod Donald Banks Peninsula Trust

- Charitable CCO of Christchurch City Council
- Established in 2010



## Objectives

- Sustainable management and conservation on Banks Peninsula
- Through improvement of parks, walkways and biodiversity



# Vision statement



**TAUĀKĪ TIROHANGA**  
**OUR VISION**

Ko te whakawhanake kaitiaki  
taiao nā te whakahōu  
ara hīkoi, ara paihikara, te  
whakaniko rerenga rauropi,  
te whakamana mātauranga  
me te mahi tahi ki ngā tāngata  
e kaingākau kaha ana ki  
Te Pātaka o Rākaihautū hoki.

Developing environmental  
guardians of the future  
through improved public  
walking and biking access,  
enhancing biodiversity,  
promoting knowledge and  
working in partnership  
with others who share  
our commitment to  
Banks Peninsula.

2

# Our Four Pillars





# Access Projects

- 1 Te Ara Pātaka track network links Lyttelton and Akaroa craters on a stunning 3 day tramp with multiple options
- 2 Rod Donald Hut is hugely popular with families introducing children to tramping
- 3 Funding grant to Orton Bradley Park enabling it to further develop as a family friendly recreational gateway to Te Ara Pātaka
- 4 Walking link from Akaroa to Hinewai reserve secured
- 5 Public access secured on Woodhills South track – Akaroa's most popular day walk
- 6 Walking linkage for Head to Head walkway negotiated to connect Allandale to Teddington
- 7 Otamahua Hut enables families to stay on Quail Island



Rod Donald Hut





# Biodiversity projects

- 11 Pilot goat eradication trial – the first “Pest Free Banks Peninsula” project to Seed funding Pest Free Banks Peninsula including initial project co-ordinator and goat eradication trial.

regenerating forest along Te Ara Pātaka below Mt Bradley

- 10 7.5ha old growth totara forest protected and public access secured
- 11 Pilot goat eradication trial – the first “Pest Free Banks Peninsula” project to Seed funding Pest Free Banks Peninsula including initial project co-ordinator and goat eradication trial.
- 12 Panama Reserve extended by 100ha with family camping.
- 13 Saddle Hill Reserve | Puaitahi Reserve protecting 145ha of snow tussock and rocky outcrop with full public access.
- 14 Purple Peak Curry Reserve protecting 190ha old growth and regenerating forest in Akaroa water catchment.
- 15 Funding grant to Banks Peninsula Conservation Trust to support their leading biodiversity recovery

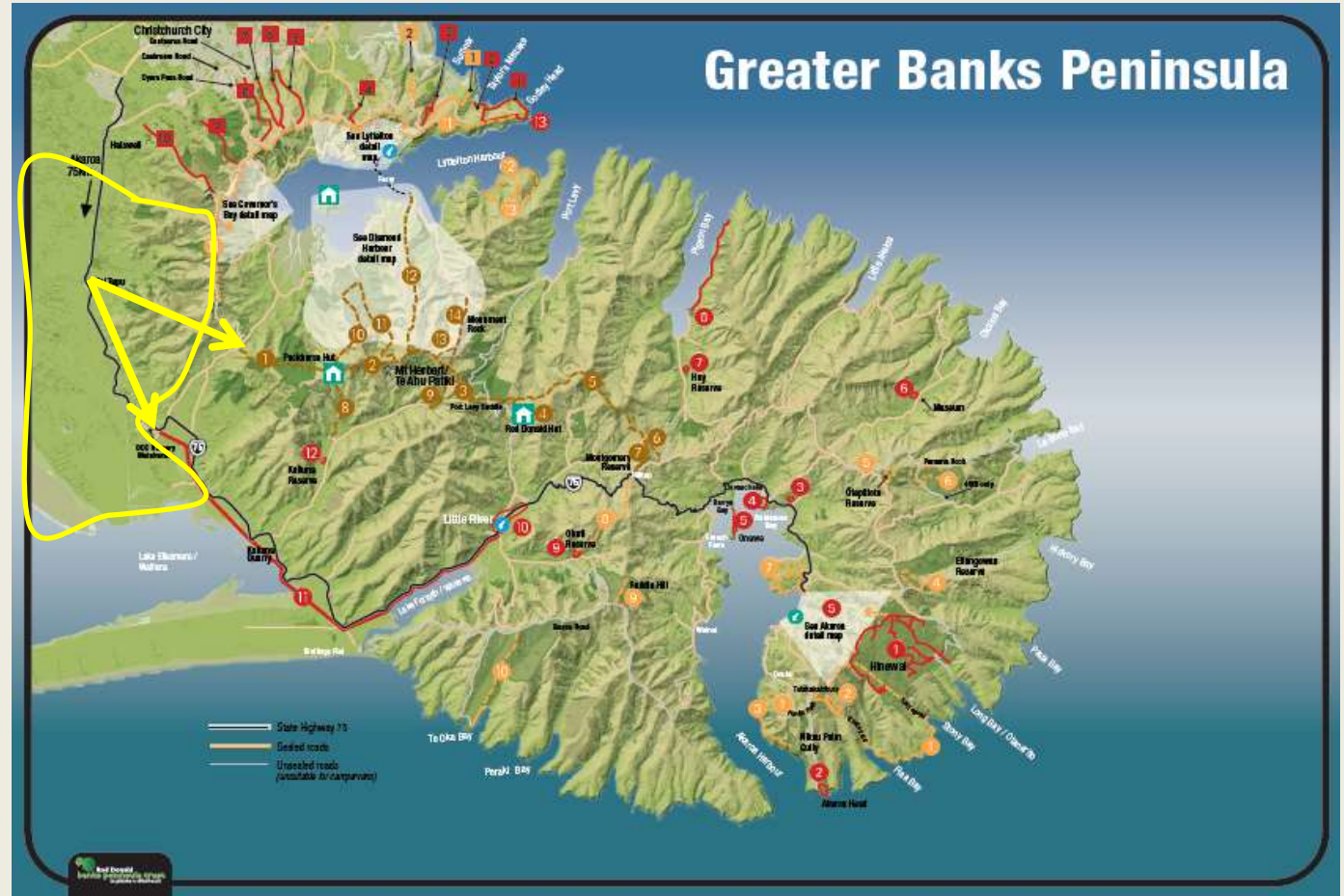


Goat eradication pilot



# Creating recreational connections with Selwyn

- Links to Crater Rim and on to Akaroa
- Links to Little River Rail Trail





# Our goals support Selwyn District Walking and Cycling Strategy

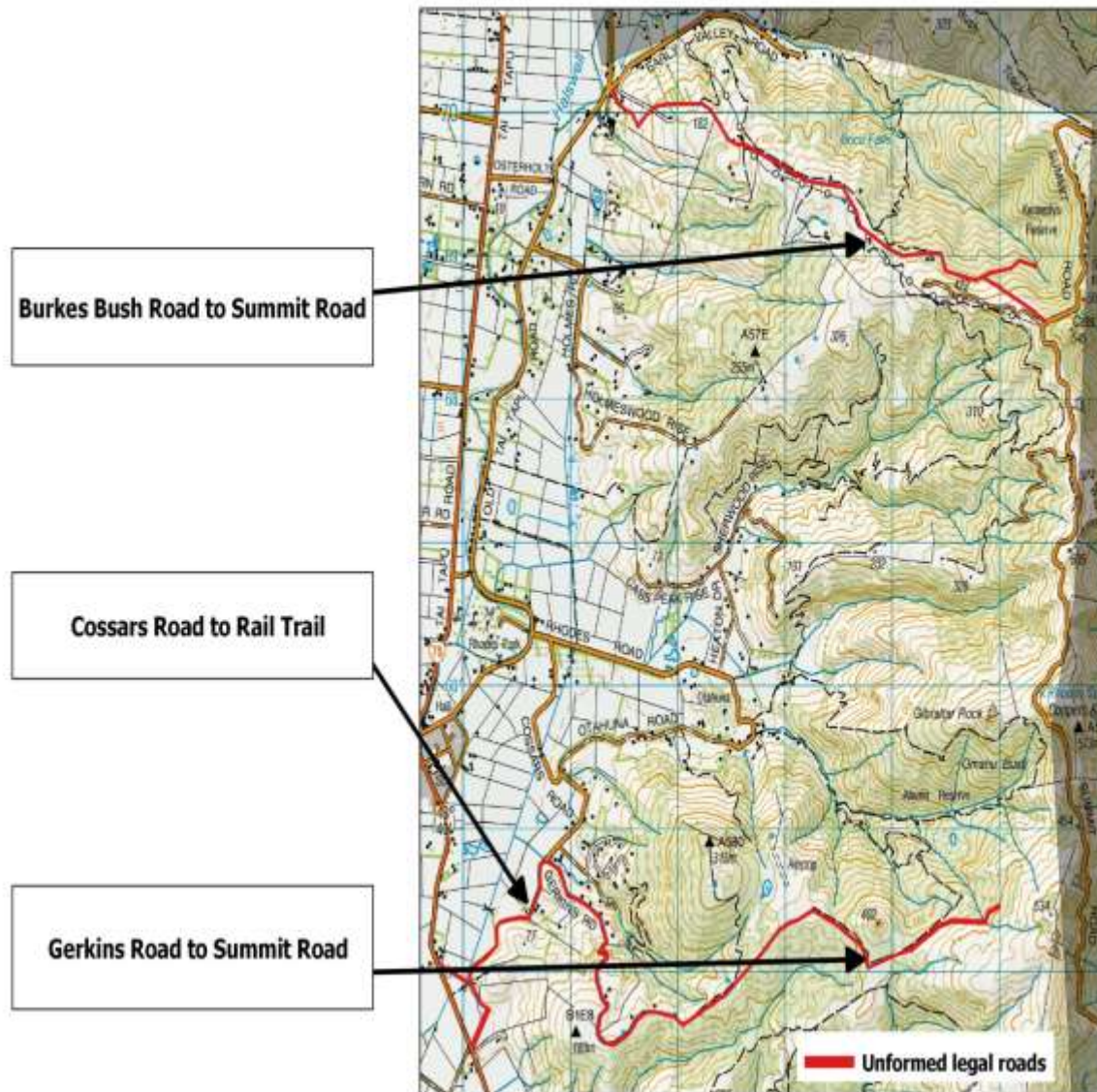
- A network of well managed walking and biking trails with long term secure public access that provide free walking and connect major communities
- Unformed Legal Roads are valued and effective as a delivery tool for walking and biking.

## **Action Plan**

*that a “Port Hills Recreational Access and Use Strategy” could be developed. This would have to be across Council departments and also involve the Christchurch City Council to see how best to plan and provide a joined up network centring on that area from Kennedys Bush across to Tai Tapu and up to the Summit Rd.*



# Suggested routes



# Pest Free Banks Peninsula

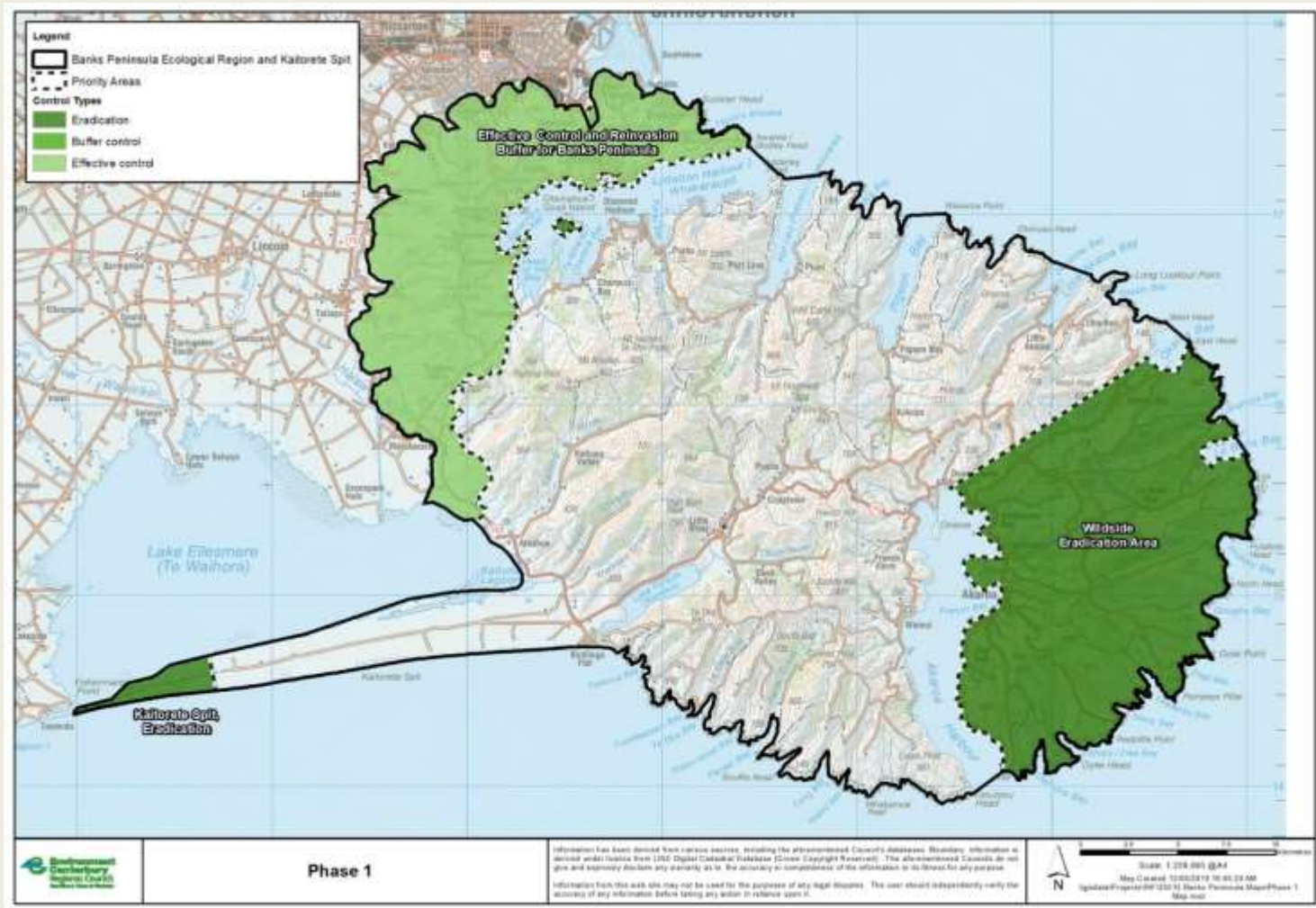




# Goat eradication Trial



# Phase 1 ambition





# What we are looking for



- **Pest Free Banks Peninsula is supported**
- **Budget provision of \$10,000 in the 2020/2021 Annual Plan and subsequent years to support Pest Free Banks Peninsula within Selwyn District, with particular reference to the Te Kāhahu Kahukura project.**
- **Continued collaboration**

# Policy sought



- **Alignment of SDC pest control policy decisions and operational work with Pest Free Banks Peninsula Program**
- **SDC biodiversity policy decisions and operational work being in alignment with the 2050 Ecological Vision for Banks Peninsula (including the Port Hills).**
- **Long Term Plan an increase in the total amount of funding available through the Selwyn Natural Environment Fund**

2050 Ecological Vision  
for Banks Peninsula



# Questions and Thank you

