

IN THIS ISSUE

- Securing access while recycling funds
- Progress with Te Ara Pātaka
- Family overnight opportunities
- Banks Peninsula Walking Festival steams ahead
- Native regeneration and carbon credits
- Pest Free Banks Peninsula underway
- Baby Trees at Rod Donald Hut
- Sustainable Trails
- Strategic Planning

From the Chair

It's with great pleasure that we report on another successful year. The Trust is well established now and its success continues to build on the vision and legacy of those Trustees who've come before us. This year we bade a fond farewell to Simon Mortlock, our highly respected founding Trustee and Chair. Many thanks Simon for your thoughtful and wise contribution to the Trust's outcomes.

Our four pillars of access, biodiversity, knowledge and partnership guide our direction, with a strong focus currently on biodiversity and partnership. The context for this is the City Council's recently declared Climate and Ecological Emergency. Banks Peninsula is well-placed to respond and the Rod Donald Trust, in conjunction with its landowner and other agency partners, can assist in this regard.

Many thanks to our Trustees, staff and contractors for your contribution to the



Peninsula and to developing our environmental guardians of the future.

Maureen McCloy
Chair



Outgoing Chair Simon Mortlock and Incoming Chair Maureen McCloy accepting a 'Conservation Week' award recognising the Trust's partnership with Department of Conservation

Farewell and Welcome

Simon Mortlock, Chair of the Trust since 2015, retired in June having served the maximum permitted term. The well-respected Christchurch lawyer had been recruited by Mayor Garry Moore when Christchurch City Council set up the Trust in 2010. Simon's skills, advocacy for partnerships, commitment to youth and warm personality have been key to the Trust's success. "The Trust's legal structure – both a charity and CCO (Council Controlled Organisation) – enables it to secure public access and protect biodiversity in ways that the Council itself is unable to," said Simon Mortlock at his farewell function.



Governors Bay Jetty Association catered Simon's farewell lunch (to his great surprise) enabling funds to be recycled into another community project dear to his heart.

Simon is succeeded as Chair by Maureen McCloy, a Trustee since 2017 and Deputy Chair for the past year. Maureen has recently retired as Corporate Services Manager for YHA New Zealand, giving her more time to dedicate to the Trust and her passion for the outdoors.

OUR VISION



Developing environmental guardians of the future through improved public walking and biking access, enhancing biodiversity, promoting knowledge and working in partnership with others who share our commitment to Banks Peninsula.

Ko te whakawhanake kaitiaki taiao nā te whakahōu ara hikoi, ara paihikara, te whakaniko rerenga rauropi, te whakamana mātauranga me te mahi tahi ki ngā tāngata e kaingākau kaha ana ki Te Pātaka o Rākaihautū hoki.

STRIDING FORWARD 2020-2030

The Trust released its 10 year strategic plan, "Striding Forward" in June along with a beautiful film showing its achievements to date. Find links to both on the home page of our website
www.rodDonaldtrust.co.nz

WOODILLS PROJECT

a novel approach to securing public access and biodiversity



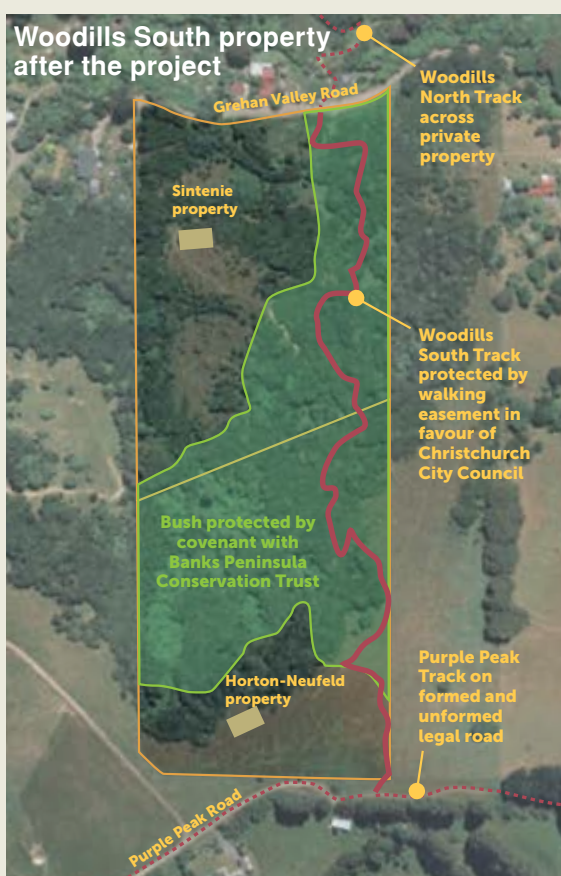
The Trust has been keen to secure public access on the popular Woodills Track for many years

Woodills Track

A popular but unsecured route above Akaroa

"Woodills Track was originally the brainchild of Akaroa entrepreneur Lynne Alexander," says Suky Thompson, "one of a series of walks she created by negotiating access across private land to connect unformed legal roads and make appealing routes. This half day mid-level loop became one of Akaroa's most popular walks."

"Many of Lynne's walks have subsequently closed on a change of land ownership," say Suky, "as they were based on informal agreements. The Trust has found over the years that landowners who generously allow the public to walk across their land are reluctant to fetter the land with an access easement in the future. Hence these informal arrangements tend to end when land changes hands."



Trust Purchases Woodills South

In 2016 when private land crossed by part of Woodills track came on the market, the Trust considered purchasing it, but didn't want to be the long term owner. "We gained confidence on learning of two local parties who would be prepared to on-purchase the land with an easement in place," says Suky.

Further due diligence revealed the Council would fund the cost of an easement as securing this link had been identified in its Public Open Space Strategy. The Strategy also identifies environmental compensation through subdivision as a mechanism available to the Council to achieve public open space, so the Trust decided to try this.

Funds recycled

Fast forward three hard years – and the Trust is delighted to announce that public access on Woodills South track has been secured in perpetuity with the property subdivided and two lots on sold to local residents. "The project has been a steep learning curve for the Trust," say Suky, "as we have achieved our first legal walking easement, our first bush covenant with Banks Peninsula Conservation

Trust, and did our first subdivision. The payback is it's the first project to increase the Trust's funds, so a win-win all round."

The new owners are local teachers Steven Horton and Erin Neufeld and their three boys (left) and Ad Sintenie (right). Also pictured are track builder Steffan Kraberger (centre) and track expert Paul Newport (centre right) on a happy day spent re-aligning the track through the new covenant.





"We thank the owner for working with us to secure public access and protect the biodiversity of a beautiful bush gully," said Bob Webster, the Trust's principal negotiator "and also Geoff Holgate from the Walking Access Commission for his support."

Most of the Te Ara Pātaka track network falls on public land but some sections cross private land, and continued access depend on the goodwill of the landowner. "The Trust is most grateful to landowners for allowing public access," says Trust Manager Suky Thompson "and a key part of our work is negotiating with

private landowners to secure that access long term."

In October last year, the Trust negotiated the transfer of 21ha on the south face of Mt Bradley from private ownership to the DOC Sign of the Packhorse Reserve. Fencing of the new reserve will commence in spring.

Partnering with DOC to improve Montgomery Reserve

"The slippery track through Montgomery Park Scenic Reserve at the Hilltop end of Te Ara Pātaka has long been on our radar for an upgrade, but transporting shingle was a daunting task," says Suky Thompson. "The turning point was DOC's offer of a helicopter".



"It was one of the most difficult locations I've ever had to drop into," said Tweezers, the DOC pilot.



Trust contractor Steffan Kraberger and his team had the tough task of distributing the shingle in these bags by hand.



This year the Trust engaged Ant Johnson of Refuge Ecology to clear the Mt Herbert Walkway connecting Orton Bradley Park to Te Ara Pātaka and the Monument Track where gorse and other weeds were taking over.

Maintaining Te Ara Pātaka

How to best maintain the Te Ara Pātaka network is an ongoing discussion between DOC, the Council and the Trust. To date DOC have maintained most of the Te Ara Pātaka tracks with Council Rangers looking after some short sections. The Trust has agreed to take responsibility for the the Monument North and South tracks and the two tracks leading up from Orton Bradley Park to Te Ara Pātaka, as to date these have not been regularly maintained.



Refuge Ecology are interested in more than machinery and captured this native male Common Copper butterfly on film as they worked

Family Camping

The Peninsula now has two great new overnight options for families wanting to experience nature!



Panama Stream Family Camp

Opening the Panama Stream Family Camp was the final step in our successful partnership with the Josef Langer Trust, extending their stunning Reserve in Le Bons Bay

The back-to-nature campground, with basic facilities built by Reserve Manager Robin Burleigh provides a base to explore the beautiful area.

Only one family or group is permitted at a time, so you have it to yourself.



To book phone Robin Burleigh on 03 304 8526



Walking tracks link the camping area to the dramatic volcanic Panama dyke and rock dome – dogs allowed.

Ōtamahua Hut

Ōtamahua Hut on Quail Island was formally opened in November by Hon Eugenie Sage, Minister for Conservation, in the Banks Peninsula Walking Festival. Visit the DOC website to book an overnight stay well in advance as the hut is proving incredibly popular.



The project represents another successful collaboration between Department of Conservation, Rod Donald Banks Peninsula Trust and Ōtamahua/Quail Island Ecological Restoration Trust



Delighted children cut the ribbon with the Minister



The former Caretaker's cottage on Quail Island has been re-purposed by meticulous hut builder David Brailsford into a 12 bed hut within easy reach of Christchurch.

Banks Peninsula Walking Festival 2018 – Highlights

“Our 2018 Walking Festival survey told us the event had been hugely appreciated by participants – despite bad weather on the last weekend,” says festival co-ordinator Sue Church, “with over 90% of respondents planning to participate again.”

“Everything was spectacular and the 8 over 800 walks were a great way to access the peaks” – was just one of many favourable comments received.

The new night walk at Hinewai enabled children and adults alike to explore the reserve with torches, searching for critters and creepy crawlies.

Our ever popular ‘Grunts and Dykes’ walk combined with the opening of the new Panama Stream Family Campground enabling trampers to explore a brand new track in the reserve.



Botanist Hugh Wilson manages both Purple Peak Curry Reserve and neighbouring Hinewai and took walkers “Round the Mountain” to experience both



Descending from ‘Little River Ridge Tops’ it was hard to look at the ground when the view was so spectacular



These walkers discovered what was hidden behind the fences in the ‘Backyards of Lyttelton’



Our volunteer guides are crucial to the Festivals success. Thanks to the Le Bons Bay Environmental Education Centre for hosting the 2018 appreciation dinner

Challenge accepted

Well done David and Eileen Mikaera the only people to complete the entire ‘8 over 800’ challenge, the new multi-day event climbing the eight highest Peninsula peaks over 4 weekends invented by Little River residents Nick Singleton and John Fitch



Upcoming 2019 Walking Festival

The Walking Festival is so popular you need to book early to get a place.

The 2019 festival initiates a multi-year challenge for hardy trampers – walking the whole of Kaitorete Spit in several stages. Family friendly walks planned are a nature trail at Gibraltar Rock, a ‘Kiwi Guardians’ challenge, more night adventures in Hinewai, and the ever popular penguin colony at Godley Head.

Some of the new adventures include a ‘Head of the Harbour’ hike in Governors Bay, the big new track

around the Takamatua Headland and Catherine Marshall Reserve at Duvauchelle.

Look for this poster to pick up a flyer.

Tickets will be available from early September – visit www.bpwalks.co.nz for more information.



We’ll be repeating the popular ‘Pirates Treasure Hunt’ on Quail Island

Concerned about plastic bags? The “Plank” is back by popular request and this year tackles Charteris Bay.



Banks Peninsula – a carbon sink for Christchurch?



Staff from MPI visited Banks Peninsula in late August to meet representatives from Rod Donald Trust, Council, DOC, ECan, Banks Peninsula Conservation Trust, QEII National Trust, Hinewai Reserve and local landowners.

The Trust has been building knowledge on the Emissions Trading Scheme this year, and made submissions stressing the opportunity the Peninsula offers for large scale carbon sequestration using natural regeneration on marginal land to both the ETS consultation and Christchurch City Council.

“Peninsula landowners are hungry for information on how to earn carbon credits from regenerating forests,” says Suky Thompson, “but registering naturally regenerating areas is not straightforward with the current rules aimed at planted forests.” The Trust has pulled together another multi-agency group and invited Ministry for Primary Industries staff to visit the Peninsula and appreciate the contribution that the area could make to reduce net emissions if some systemic issues around registration are addressed.



DOC ranger Tom MacTavish discusses regeneration in the remote Southern Bays with landowners

The Trust's detailed report is available at roddonaldtrust.co.nz/documents/projects

Rod Donald Hut 'Baby Trees'



“Thanks to Sophie Hartnell from Banks Peninsula Conservation Trust who organised BPCT and Student Army volunteers planting natives along the Rod Donald Hut access track to help suppress gorse,” says Suky Thompson.



“We’re copying a successful method used by Pete Ozich on his Diamond Harbour School Track. Alkathene tubes direct water to the roots, so a little water goes along way,” says Suky. “Hare guards and weed mats improve survival and the baby trees are thriving, with hut visitors taking time to do a little watering during their stay.”



Volunteers appreciate Rod Donald Hut over lunch

Pest Free Banks Peninsula

“Banks Peninsula Conservation Trust have done an outstanding job pulling all the key players into the Pest



Representatives from organisations signing the Pest Free MOU last November

Free Banks Peninsula & Port Hills Partnership,” says Richard Suggate who has been representing the Rod Donald Trust at initial meetings to get this ambitious program underway. DOC, CCC, ECan, Selwyn District Council, all Peninsula runanga – Ōnuku, Wairewa, Rapaki, Koukourārata and Taumutu– Summit Road Society, Living Springs and the Cacophony Project are all participating and the door is open for others to join. “By providing the funding to prepare an operational plan, the Trust played a crucial role in getting ECan’s agreement for a



The Tui is just one of the native species expected to benefit from reduced pest numbers across Banks Peninsula

targeted rate to contribute to this work,” says Councillor Cynthia Roberts. Find out more from the Pest Free Banks Peninsula Partnership’s new website coming soon.

Sustainable Trails Conference

"Trails are big business and attracting major investment around Australia and in parts of New Zealand."

"E-bikes are opening new markets for cycle trails, and DOC gave us a preview of their new Great Walk, the Paparoa Pike 29 Memorial," said Maureen McCloy, after attending the Sustainable Trails Conference held in Marlborough in April. "With so much going on elsewhere, the Christchurch area is in danger of getting left behind, underlining the importance of the Trust's work."

The Trust presented the Te Ara Pātaka network as a gateway destination on the doorstep of Christchurch enabling busy families and novice trampers to engage with the wonderful environment on their doorstep and develop environmental values. "That emphasis on youth and the environment was point of difference," says Richard Suggate who also attended, "and was well received by the other delegates."



Trust Manager Suky Thompson introduces Banks Peninsula to the Australasian audience before describing the Te Ara Pātaka multi-day tramping route.

Head to Head Walkway

The Trust has been supporting the vision of a continuous walkway around the coastline of Whakaraupō/Lyttelton Harbour, and is working to create new access across private land to connect up the existing sections of the route.



A track across Living Springs is planned to link Allandale to Teddington Flat. Whaka-Ora/Healthy Harbour manager Karen Banwell and Living Springs manager Denis Aldridge check out a potential scenic route.

2020 directory planned

Watch this space. A revamped version of our popular walking directory is planned for 2020, with more information on how walkers can understand farming operations and respect the land they traverse.

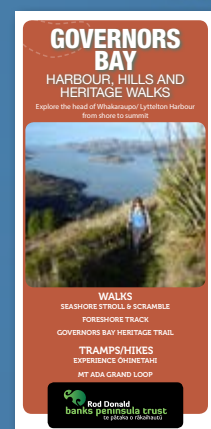


Governors Bay Brochure

A new walking brochure for Governors Bay will be released in November coinciding with the Banks Peninsula Walking Festival. "It has been delightful discovering hidden gems and exploring with locals to find the best walks," says Sue Church who features on the brochure cover.

Walks featured vary from the gentle heritage trail and seashore stroll to climbing through steep Ōhinetahi Reserve to the crater rim.

All walks visit the centre of the village – enabling a coffee or lunch stop as part of a relaxing day out.



Striding Forward Strategic Plan

The Trust presented its 10 year Strategic Plan to Christchurch City Council in June this year, with ambitious goals to further its four key pillars of Access, Biodiversity, Knowledge and Partnership and a vision to use these to develop the environmental guardians of the future.

A joint working party has now been formed with the Council to discuss how the Trust can be funded once its initial funds are used up. "With \$2 million left in the fund the Trust is some way from that," says Trustee Paul McNoe, "but we have some ambitious projects in the pipeline and felt it prudent to give the Council an early warning." The Trust is working to achieve the Council's Public Open Space Strategy and has been

able to make progress in economical and innovative ways due to its structure as a charitable Trust.



[Download "Striding Forward | Hikoi Whakamua" from our website \(under Documents/Other\) to read about our vision, achievements to date and future goals.](#)



Remembering Rod Donald

The idea of an environmental Trust for the Peninsula first germinated in 2005 when the Banks Peninsula District amalgamated with Christchurch City Council. Public consultation revealed support for naming it to honour Green MP and co-leader Rod Donald after his untimely death in the same year. Although the Trust is not related to the Green Party, it tries to honour Rod Donald's values in its work.



"We feel Rod would be proud of the Trust's achievements, the legacy of biodiversity and walking access created and our focus on creating the environmental guardians of the future," says Cynthia Roberts.



Movie Making

Local film makers Shannon and Andy Aroha of Wildcraft films did an outstanding job producing a film to support our Strategic Plan. Watch 'Striding Forward', stating our strategic vision and achievements to date on <https://www.youtube.com/watch?v=pAMeS1nQK8Y>

Local families Jade Barbarich (left) and the Walker-Rogal's (below) assisted with the film.



"I've been impressed at how effective the Trust has been at achieving the Council's goals," says Christchurch Deputy Mayor and Rod Donald Trustee Andrew Turner at the start of the film.

Drone footage (right) shows the Peninsula's spectacular scenery



Donations and Bequests

The Trust welcomes donations, however big or small. If you support our work or have enjoyed Rod Donald Hut, our publications, the Walking Festival or one of the new Reserves, please visit our [Givealittle](#) page.



"Bequests are particularly welcome as a way to bolster our finances long term," says Maureen McCloy.

Current Trustees and Staff

Current Trustees are: Chair Maureen McCloy, Andrew Turner, Bob Webster, Cynthia Roberts, Bryan Storey, Richard Suggate, Paul McNoe
Staff are: Suky Thompson Trust Manager, Sue Church Administrator

Follow our news during the year on:

www.rodonaldtrust.co.nz

Follow us on  RodDonaldBPTrust

Donations are welcomed.
You'll find us on Givealittle.
Search for Rod Donald.

 **Rod Donald**
banks peninsula trust
te pātaka o rākaihautū

For our walking information see
www.bpwalks.co.nz