

Draft Misty Peaks Reserve Management Plan Submission of Rod Donald Banks Peninsula Trust

Submitter Details:

Postal Address: Rod Donald Banks Peninsula Trust
PO Box 5
Little River, 7546

Email Address: suky@roddonaldtrust.co.nz

Phone Number: 03-304-7733

Contact Person: Suky Thompson, Trust Manager

The Trust wishes to be heard in support of its submission.

1 Introduction

The Rod Donald Banks Peninsula Trust (Trust) is a charitable trust and a CCO founded by the Christchurch City Council in 2010 for the benefit of the present and future inhabitants of Banks Peninsula and for visitors to the area. The Trust has objectives to promote sustainable management and conservation of the natural environment and environmental based projects focussed on the maintenance and development of recreation facilities including parks, reserves and walkways.

The Trust seeks to work in partnership with other organisations to achieve its objectives and to align activities with the projects and initiatives of Christchurch City Council. It aims to work holistically on projects underpinned by four key pillars of improved public walking and biking access, enhancing biodiversity, building and promoting knowledge and working in partnership with others.

The Trust produces a range of walking publications including the Akaroa Country Walks brochure which features walks on and connecting to the Misty Peaks Reserve, and a website www.bankspeninsulawalks.co.nz

We have close working relationships with the Christchurch City Council Regional Parks Team, Hugh Wilson, manager of the nearby Hinewai and Purple Peak Curry Reserves, NZ Native Forest Restoration Trust, Department of Conservation, private landowners in the vicinity of the reserve and the business group Akaroa District Promotions.

2 Misty Peaks opportunity

The Trust supports the introduction of a Reserve Management Plan for the Misty Peaks Reserve, and is in agreement with the draft Plan as far as it has gone, but would like the Council to take a much more aspirational and holistic approach and commit to making progress on the reserve in the near future.

We suggest that development at Misty Peaks takes priority over Te Oka Reserve because there are fewer issues to resolve and the developing Misty Peaks appropriately is likely to have economic benefits for Akaroa at the time when cruise ships transition back to Lyttelton.

Misty Peaks is an extraordinary area of land with huge potential for further development. It is

- spectacularly positioned right above the busy and popular tourist and holiday centre of Akaroa, including the summit ridgeline and land on both sides of the ridge
- forms part of a contiguous area of land protected for biodiversity and recreation stretching over 2000ha
- already offers some walking and mountain biking opportunities as part of larger loops linked to the Akaroa township.

- is part of the Wildside - a collaborative effort to protect endemic, threatened and iconic species over 13,500ha in the south eastern part of Banks Peninsula.
- includes the maunga mountain for Ōnuku rūnanga
- protects catchment for the Akaroa township and streams that feed into two marine reserves
- has the potential to contribute to climate change mitigation through carbon sequestration.

Our submission recommends the following to strengthen the Management Plan and help Misty Peaks achieve its potential to contribute to Akaroa and the wider region through adding new recreational opportunities and large scale biodiversity enhancement.

- Open the plan with a fuller description of the context within which Misty Peaks sits giving consideration to the matters above and showing this context more fully on the introductory map. Some of the information in the Background section could move to the Introduction and be used to inform the Objectives of the Plan.
- Acknowledge “Akaroa Country Walks”, the existing recreational track network around Akaroa and describe where Misty Peaks currently fits. We provide more information on this network in Appendix 1 to this submission.
- Acknowledge that the road connections are an issue for Misty Peaks. Neither of the roads accessing the summit ridgeline – Stony Bay Road and Lighthouse Road – are suitable for increased traffic or large vehicles, nor is Aylmers Valley Road which accesses the lower part of the reserve.
- Determine how to best provide access from Akaroa to the reserve. We suggest that walking and biking access could be developed on unformed legal roads from the top of Stanley Park, or Aylmers Valley Road could be developed for some shared use. Developments in the reserve that increase use should trigger one of these options. We provide more information in Appendix 2.
- As a bare minimum, commit to developing the Newtons Waterfall loop track to a suitable standard for families, make the summit track connect Stony Bay and Flea Bay Roads without losing altitude on the eastern side, and create a circular loop track connecting the lower part of the reserve to its upland areas to preclude recreational users having to use gravel roads for upland access.
- Develop more mountain biking in Misty Peaks. The other reserves above Akaroa – Hinewai and Purple Peak Curry Reserve do not permit mountain biking. Developing mountain biking in Misty Peaks would add to and complement the existing recreational opportunities and could support the local Akaroa economy by bringing a new group of recreationalists to the area. This could be important as the economy recalibrates when cruise ships relocate to Lyttelton. Note that while suggesting mountain biking would provide a new visitor group for the town, we also acknowledge that it needs to be carefully managed in the reserve.
- Consider allowing dogs into the Misty Peaks Reserve. Again, neither the Hinewai or Purple Peak Curry Reserves permit dogs, meaning dog walking recreationalists have few opportunities for longer walks with dogs.
- Both Hinewai and Purple Peak Curry Reserves are managed with a philosophy that puts conservation goals first if there is a conflict with public use. We suggest that Misty Peaks could offer the reverse, and put recreation first.
- Commit to working collaboratively with the Wildside Project to co-ordinate species enhancement and pest control and with the managers of the adjacent reserves. Similarly acknowledge that the Council has signed up to Pest Free Banks Peninsula collaboration.
- Consider how Misty Peaks could be used for carbon sequestration and the potential to gain

some income from this to support further work on the reserve.

- Commit to involving the local community and other stakeholders in the management of the reserve through a Reserve Management Committee.
- Commit to developing the detailed Landscape Plan within a defined year frame (we suggest two years to match the cruise issue for Akaroa).
- We note that the lower part of the Reserve surrounds a private block of land and suggest the Reserve Management Plan recommends acquiring part or all of this if it comes on the market, as the Takapuneke Reserve Management Plan did with the Red House.
- We support the submission from Department of Conservation.

3 Detailed submissions

The following lists proposed amendments to the draft management plan. These are indicative changes only and if accepted, any consequential amendments should also be made, whether listed here or not.

Reference	Suggested amendment	Reason
Page 2 Figure 1 View South West over Akaroa	This overview map should show the boundaries of the Hinewai and Purple Peak Curry Reserves, the main walking routes that access Misty Peaks and existing walks within the Reserve. These include the Skyline circuit link from Hinewai Reserve to Stony Bay Road, the shared walking/mountain bike track along the summit ridgeline of Misty Peaks linking Stony Bay Road to Lighthouse Road and the Newton Falls walk. It would be useful to show that both Stony Bay Road and Lighthouse Road currently provide the mountain biking and walking route direct from the town of Akaroa, and the town itself should be labelled.	Strengthen the context of the Reserve. Maps from Akaroa Country Walks brochure given below will assist.
Page 9 Section 1 Introduction	Add an opening paragraph introducing the reserve at the start of Section 1, or add a preface at the start.: <i>Misty Peaks occupies 489ha of land, spectacularly positioned above the busy and popular tourist and holiday centre of Akaroa. It includes the summit ridgeline and land on both sides. The reserve is part of a contiguous area of land protected for biodiversity and recreation stretching over 2000ha and the Wildside project - a large scale collaborative project to protect endemic, threatened and iconic species over the south eastern part of Banks Peninsula. The maunga for Ōnuku, Ōteauheke, is a prominent peak on the Misty Peaks ridgeline, giving it a special significance to the rūnanga. The reserve includes part of the Akaroa water catchment and supplies streams leading to Marine protected areas in both the Akaroa harbour and outer coast.</i> <i>The Christchurch City Council purchased the land in 2007 recognising its outstanding value to the area for biodiversity, recreation and water quality, and now seeks to realise that value through this Reserve Management Plan. The Reserve Management Plan includes provision for development of a more detailed Landscape Plan which the Council will develop in conjunction with the local community and other stakeholders.</i>	Set the Reserve in context from the outset and the aspiration going forward.
Page 9, 1.1 Location and Access Para 1	Remove reference to the Marine Reserve End the sentence after the words Flea Bay Road.	The Marine Reserve is an important feature of the Wildside, but not a predominant feature requiring mention in the first paragraph
Page 9, 1.1 Location and	Rename this section and limit it to describing the Location only. Location	Access is an issue for Misty Peaks and

Reference	Suggested amendment	Reason
Access		requires a separate section so that it can be properly addressed.
Page 9, 1.1 Location and Access Para 2	Use Maori names for the peaks in this paragraph	Seems more appropriate to introduce the Te Reo names here than in the next paragraph
Page 9, 1.1 Location and Access After Para 2	Move paragraph about Akaroa to 3 rd paragraph. Add a sentence to the paragraph about Akaroa stating <i>People come to enjoy the natural beauty of the area and experience nature. Recreational walking is a popular activity with residents and visitors, but opportunities for mountain biking and dog exercise are currently limited.</i>	The most significant attribute of location is that the reserve is near to Akaroa. The Akaroa Information Centre reports that 50% of its enquiries are for recreational walking.
Page 9, 1.1 Location and Access Para 6	Add an opening sentence to this paragraph: <i>The reserve is part of a 2000ha contiguous area of protection. This includes the adjacent Hinewai Reserve, and the Purple Peak Curry above Grehan Valley.</i>	While these are not surrounded by Misty Peaks like Armstrong reserve, they equally or more significant, because they are larger and provide public access
Page 9, 1.1 Location and Access Para 8	Reword as follows: Remove the paragraph addressing Access and place in a separate access section after Notable topographic features and Landscape	Access is one of the major issues for Misty Peaks and requires a more detailed explanation, which sits more logically after the landscape and features have been introduced.

Reference	Suggested amendment	Reason
Page 10 Section 1.2 Notable Topographic Features	<p>Combine the Landscape and Notable Topographic Features sections. Reword as: <i>Misty Peaks Reserve provides the scenic backdrop for much of the Akaroa skyline. It is in a prominent location straddling the eroded crater rim of the ancient, now extinct, Akaroa shield volcano.</i></p> <p><i>The most notable feature of the reserve is the crater rim - spectacular summit ridgeline stretching 3.5kms along the Akaroa skyline providing superb views in all directions. It includes 4 rocky peaks ranging in height from just below 700m to over 800m.</i></p> <p><i>The west facing slopes on the Akaroa side present a dappled mosaic of regenerating native forest and open pastureland, with views somewhat marred by the large pine plantation near the eastern end of the ridgeline. Lower down the bush clad Aylmers Stream includes a notable waterfall (Newton's Waterfall) in the stream's true left fork about 250 metres upstream from the Akaroa water supply intake located at the mouth of the valley. This was a popular Akaroa walking destination in the early part of last century, and the purchase of Misty Peaks Reserve by the Council has re-enabled public access, making it a popular walk once again.</i></p> <p><i>The west side of the reserve surrounds a large area of private pastoral land is surrounded by the lower slopes of Misty Peaks on the Akaroa side.</i></p> <p><i>The east facing slopes are predominately covered in gorse, but provide superb views to the outer valleys and coast of the Wildside.</i></p>	<p>Landscape addressed first as Notable features are a subset.</p>
Add Section 1.3 Access	<p><i>The reserve currently has three entrances. The lower part of the reserve is accessed from the end of Aylmers Valley Road. There is a small space for off-road parking here. A short track leads to Newtons Waterfall.</i></p> <p><i>The upper part of the reserve can be accessed from either Stony Bay Road, just below the ridgeline on the western side, and Flea Bay Road along the summit. A shared use walking and biking track running connects the upland entrances. There are small off-road parking areas near each</i></p> <p><i>All access roads are narrow shingle roads, and used for foot, cycle and vehicular access. Increased usage as the reserve develops will need to be addressed.</i></p> <p><i>Walkers from Akaroa can also access the reserve via the Purple Peak Curry Reserve and Hinewai coming along the ridgeline from the north on the Skyline Circuit route.</i></p> <p><i>There are unformed legal roads leading to Misty Peaks Reserve from Stanley Park in Akaroa that could be used to develop new off-road access to the Park.</i></p>	<p>The Plan should recognise and explain the roads, entrances and the existing tracks</p> <p>The idea of developing the unformed legal roads for access needs to be explored</p>

Reference	Suggested amendment	Reason
Page 11 Sections 1.6, 1.7	An up to date ecological survey of the reserve should be conducted to provide more information for these sections and a baseline of what is present	More information on what is in the reserve and the threats would help inform the policies and the management of the reserve
Page 12 Section 1.8 Recreation Use	<p>Reword and expand</p> <p><i>Misty Peaks Reserve has attributes that lend to it being a good provider of opportunities for visitors to experience, mainly through walking and mountain biking, wonderful views from what is a prominent ridge crest, and natural areas.</i></p> <p><i>Currently there are only two public tracks established in Misty Peaks, a short walk to Newtons Falls, and the upland track connecting Stony Bay and Flea Bay Roads. These tracks are promoted to the public as part of the Akaroa Country Walks network, in a brochure available at Information centres and on trail head signage in various locations, but not as yet Misty Peaks.</i></p> <p><i>Both tracks have their limitations. The Newtons Falls track is a one way experience, and does not link further into the reserve or to the upland areas. The upland track follows the summit ridgeline for about half its length, but then leaves the ridgeline and drops down on the Flea Bay side, losing 100m in altitude before rising to the ridge again. It would be much improved as a route that stayed on the summit ridgeline.</i></p> <p><i>Walkers using the Akaroa Country Walks maps and brochures are currently encouraged to access the Misty Peaks summit ridgeline track from Akaroa on the Skyline Circuit route to minimise road walking. The loop route return, however, is still on Lighthouse Road</i></p> <p><i>The Misty Peaks summit ridgeline track offers the only opportunity for off-road mountain biking in Akaroa, as biking is not permitted in Hinewai and Purple Peak Curry Reserves. Mountain bikes access this track using either the Stony Bay or Lighthouse Road due to this restriction.</i></p> <p><i>Otherwise Misty Peaks Reserve is primarily an undeveloped and natural area and presents scope for further development and to provide recreational opportunities that add to what is currently available from Akaroa.</i></p> <p><i>Mountain biking is not well catered for in Akaroa, and Misty Peaks lends itself to this use to provide complimentary recreational opportunities to those available in the adjacent reserves of Hinewai and Purple Peak Curry Reserve. Misty Peaks also has the potential to provide for recreational horse riding and dog walking, as these are also not</i></p>	<p>The existing tracks, how they are promoted, and their limitations should be described. (Note: brochures are produced by the Rod Donald Trust, and the trail head signage has been a joint project of the Trust and Council.)</p> <p>Plan should offer some direction on the potential for new recreational opportunities based on what is needed to round out the recreational spectrum in Akaroa. Mountain biking is recommended for Misty</p>

Reference	Suggested amendment	Reason
	<p><i>permitted in the other reserves.</i></p> <p><i>The addition of tracks that linking the town to the park would greatly improve access to it. Internal tracks linking the lower part of the reserve to the summit ridgeline are also needed to alleviate the current use of the steep, shingle roads adjoining the park.</i></p> <p><i>There is the potential for formal occupations to be granted to individuals or companies that provide non-exclusive tourism/recreation guided experiences through the park.</i></p>	<p>Peaks as there is no other mountain biking available. Similarly dogs.</p> <p>Unclear what is meant by the term non-exclusive?</p>
Page 12, Section 2 Issues Rename	Put the information from Section 3 Vision before the Issues 2 VISION	Provide clarity on where the Management Plan is heading. Set the context for the issues (which currently introduce aims such as ultimately de-stocking the park) and then the Objectives. See Garden of Tane RMP for example (Note comments on the current Section 3 are given below.
Page 13 para 5	Replace: wilding pines with <i>pine plantation and wilding pines</i>	Clarity
Page 13, last para	As per revised Introduction proposed - move footnote as a consequential amendment	
Page 15, Section 2.7 Access and Use	Reword from Para 2 as follows: <i>The most challenging issue for developing Misty Peaks is access. All roads leading to reserve entrances are narrow and shingle in parts. All are currently used for foot, cycle and vehicular access, which is adequate while the reserve experiences low usage, but will need to be addressed as usage increases. Potential solutions are to develop one or more of the unformed legal roads from Stanley Park leading to the reserve, and/or to Aylmers Valley road for safer shared use.</i> <i>Additionally tracks are needed within the reserve to enable access between the lower entrances and upland areas</i>	Reword to take into account that there are already recreational tracks and connections, but that better connections are critical to the development of the reserve

Reference	Suggested amendment	Reason
	<p><i>without using the vehicle roads. An internal loop route within the reserve is essential.</i></p> <p><i>There is are excellent prospects for a family friendly loop track along the forks of Aylmers Stream, including past Newton's Waterfall, for a track along the length of the ridgeline, and to use existing graded farm tracks to create a loop route from the Aylmers Valley entrance to the summit ridgeline.</i></p> <p><i>There is a need to consider additional opportunities for connections between Misty Peaks Reserve and other publicly accessible areas by way of walking routes and tracks; for example, with the Akaroa Country Walks network and the Banks Track. The Public Open Space Strategy 2010-2040 envisages a connection across from the Woodills Track at Purple Peak Road creating a mid-level walking route above Akaroa. Subdivision of land above Akaroa may present opportunities to secure such access and should not be missed.</i></p> <p><i>It is expected that as the connections to Akaroa and internal tracks are developed there will be an increased demand for access by a range of users and, in particular, for mountain biking. Careful management of potential conflicting uses and overuse is important, and provision of appropriate facilities, good track marking and information is needed. The development of ad hoc tracks by members of the public is not permitted.</i></p>	<p>The Akaroa Country Walks network is the brand for all tracks from Akaroa in the hillslopes facing the town. Hinewai forms part of this.</p> <p>Beware the Urumau Reserve experience, where mountain bikers constructed ad hoc trails to the detriment of biodiversity work done by other community members and erosion issues</p>
Page15, Section 2.8 Facilities and Utilities	<p>Reword</p> <p><i>Generally, the aim for Misty Peaks Reserve is for it have minimal building, and for any buildings that are required to be unobtrusive. A day shelter on the summit ridgeline and toilets will be necessary as use of the reserve grows. These could be simple composting or pit toilets, sited well away from waterways, meeting the permitted activity standards in the Land and Water Regional Plan. Where buildings are needed to enable the best management and use of the park, they should be considered if they support the direction, values and objectives for the park. –</i></p>	<p>The experience of Hinewai and Banks Track is that shelter is necessary on the summit ridgeline for public safety and toilets will be needed as use grows, but these should be kept simple to minimise issues. The ECan LWRP sets out the standards for pit toilets as a permitted activity.</p>

Reference	Suggested amendment	Reason
Page 16 Section 2	Add a new Section 2.9 <i>The reserve surrounds a large area of undeveloped private land on its northwestern side as shown in the map below. It is desirable that this be added to the park if possible at some stage in the future.</i>	
Page 17, Section 3.1 Park Purpose	Move to section 2 and reword 2.1 Park Purpose <i>To protect and foster the environmental, landscape, biodiversity, historic and cultural values of Misty Peaks Reserve as part of a wider area of contiguous protection and provide low impact and varied outdoor recreation experiences that are exciting, memorable and educational and act as a drawcard for Akaroa.</i>	Misty Peaks is a fantastic opportunity so aim higher and be bolder!
Page 17 Section 3.2 Management Aims	Reword as: <ul style="list-style-type: none"> • <i>Protect and enhance natural values through restoration of native biodiversity across the reserve</i> • <i>Provide public access on an extensive and well maintained network of tracks and trails creating a variety of experiences and appealing to a wide range of users</i> • <i>Maintain and promote the historical, cultural, environmental values and feature and retain views from key points</i> • <i>Provide and maintain facilities as needed</i> • <i>Collaborate with and work toward shared aims with the Wildside project, neighbouring reserves, Akaroa Country Walks track network, Public Open Space Strategy and the Akaroa community.</i> • <i>Ensure the reserve adds value to, connects with and complements the other recreational opportunities in the area.</i> 	Again be bolder and aim higher The Reserve should not be managed in isolation, but in conjunction with the other relevant biodiversity and recreation projects in the area.
Page 18, Policy 3.1	Reword promoted to explained	More accurately describes what is proposed.
Page 19 Policy 4.4	Add and the Wildside project and Pest Free Banks Peninsula 2050 consortium.	The Wildside includes Misty Peaks and is a pest management program. The Council is a signatory to the Pest Free Banks Peninsula collaboration and Misty Peaks should recognise

Reference	Suggested amendment	Reason
Page 19 Add Policy	4.5 Removal of exotics and wildings Exotic species that present a weed threat and wilding pines will be removed. The pine plantation along the summit will either be removed or managed for native succession as determined by the Landscape Plan.	this. The future management of the pine plantation needs to be signalled.
Page 19 Policy 5.1	Add and the Wildside project.	The Wildside includes Misty Peaks and a native fauna protection program
Page 20, Section 4.6, Fire	Add another Policy 6.5 No Smoking is permitted in the Park	Smoking is another fire risk
Page 20 Policy 8.2	Reword as <i>Walking and mountain biking tracks shall be developed, as needed and subject to an approved landscape plan, and maintained throughout the park.</i> <ul style="list-style-type: none"> <i>This will include, but not be limited to, a circular route from Aylmers Valley entrance to the summit ridgeline track, a shorter circular route incorporating Newtons Falls and to a standard suitable for family walks, and a track running the length of the summit ridgeline.</i> <i>Shared use tracks are only to be used where there is good visibility and in bushed areas walkers should be routed onto separate tracks. Any tracks developed must be as agreed with Council staff.</i> <i>Additional connections to the Akaroa Country Walks network will be explored, including a low level connection to the Woodhills track as identified in the Public Open Space Strategy 2010-2040</i> 	Why should track installation be minimal? The reserve has been in existence for 11 years, and this comment proposes no more than what already exists. Preclude Mountain bikers making their own tracks. The POSS envisages a mid level cross country track connecting across the back of Akaroa from Woodhills Road right through to Lighthouse or Aylmers Valley Road. This should be part of the Management Plan.
Page 20	8.6 Tracks and facilities will be well maintained, and according to NZ track standards	Important that this is an

Reference	Suggested amendment	Reason
Additional policy		objective.
Page 20 Policy 8.3	Add day shelter on summit ridgeline track	
Page 22 8.6	Add Helicopter and aircraft landing is permitted for emergency or management use only. Drone flying is not permitted except with permission from the Council Restrict the motor size for ebikes.	To protect the natural values of the park which include its peacefulness/
Page 22 Policy 8.7	Dogs should be allowed, with appropriate management as they are in many other Council reserves, and the Council's dog by law changed as a result.	Dogs are not permitted in Hinewai or Purple Peak Curry Reserve. Allowing dog walking in Misty Peaks reserve would provide a complementary activity. The Rod Donald Trust regularly receives queries from people seeking places to walk dogs.
Page 22 Policy 8.9	Camping should be prohibited	The RMP should state a no camping policy due to the fire risk, regardless of Council overall policy.
Page 23, Policy 10.1	Reword. Currently unclear	What does "shall provide continuous access" mean?
Page 23 Policy 10.3	Reword as: Reword as <i>Attractive, adequate, clear and informative directional and destination signage that is compatible with other walking signage in the area and acknowledges Misty Peaks tracks as part of the wider network shall be provided.</i>	The signage needs to be compatible with other walking signage in the area and part of the cohesive network– not

Reference	Suggested amendment	Reason
		always the Council's signage guidelines, and it needs to acknowledge that people may be walking or biking to other places than just the reserve itself. So the signage needs to be part of a cohesive network.
Page 24 Connections Add another policy	Add 13.2 Co-operation and respect will be given to the other existing organisations and projects in the area with similar aims, such as Hinewai and Purple Peak Curry Reserve, the Wildside Project, the Akaroa Country Walks network and Banks Track to develop the biodiversity and public open space of Misty Peaks in a way that aligns with and complements them.	A policy to recognise Misty Peaks as part of the wider collaborative effort
Page 25 Community Involvement Objective 15	Change wording to: 15 Establish a Reserve Management Committee for the Misty Peaks Reserve Policy 15.1 A Reserve Management Committee is to be established for Misty Peaks in line with the Council's Reserves Management Committee Terms of Reference and may include stakeholders from the local and wider community. Policy 15.2 The Reserve Management Committee will develop a Landscape Plan in conjunction with Council staff within 2 years of its appointment to foster appropriate development in the reserve. Policy 15.2 The Reserve Management Committee may involve the wider community in the management of the reserve by organising volunteer opportunities and events.	Reserve Management Committees are a way to keep the reserve relevant and informed. They should be the ones to oversee a Landscape Plan. The public should play a greater role in management of the reserve.
Page 25 Add new objective	4.17 Carbon sequestration OBJECTIVE: 17 Earn an income for the park through financial recognition of its carbon sequestration Policy 17.1 Register the Park under the ETS for carbon credits. Re-use the income to support the development, management and maintenance of the park.	
Page 32	Add to Section 5.8 before the Banks Peninsula Track Company paragraph	The Akaroa Country

Reference	Suggested amendment	Reason
Section 5.8 Access and Connection	<p>in</p> <p><i>Akaroa Country Walks is a network of public tracks starting and ending in Akaroa township, promoted with brochures and maps available at Information Centres throughout the Peninsula and Christchurch City via the online resource www.bankspeninsulawalks.co.nz, and from the main tourism site www.akaroa.com, and on trail head signage at four major track entrances at Akaroa. The network includes all the existing public tracks in the hills behind Akaroa, including Newtons Waterfall and the current Misty Peaks summit ridgeline track. The Newtons Waterfall walk is routed via Aylmers Valley Road. The summit ridgeline track, named Misty Peaks, is presented as a shared use loop track from Akaroa accessed via Stony Bay Road and Lighthouse Road for bikers, and as an extension to the Skyline Circuit route for walkers to minimise road walking. The Akaroa Country Walks network and associated promotional materials are reviewed annually to incorporate changes and new developments.</i></p> <p>Please also include the map of the Akaroa Country Walks either in this section or an appendix to the Plan.</p>	<p>Walks walking network needs to be acknowledged first. This is a public network and very heavily used and promoted through all Information centres and the principal tourism website for Akaroa, and includes the existing Misty Peaks tracks. It is the principal way that visitors find out about Misty Peaks at present. Information to assist the Council with appreciating this network is presented in Appendix 1</p>
Page 32 Section 5.8 Access and Connection	<p>Para 2 line 4 reword as:</p> <p><i>passes alongside Misty Peaks Reserve enroute....</i></p>	<p>Correct Para 2. The Banks Track does not pass through Misty Peaks. It goes beside it on the Flea Bay Road.</p>
Page 32 Section 5.8 Access and Connection	<p>Add final paragraph.</p> <p><i>Misty Peaks Reserve has good views over Flea Bay, home to the Pohatu Marine Reserve and the largest penguin colony on Banks Peninsula/ Te Pātaka o Rākaihautū.</i></p>	<p>Appropriate place to mention the Pohatu Marine Reserve, although it does not seem directly relevant</p>
Page 35 last para	<p>Reword last sentence as:</p> <p><i>The reserve is owned by the New Zealand Native Forest Restoration Trust and managed by Hugh Wilson and staff of Hinewai Reserve</i></p>	<p>Trust alone is ambiguous here.</p>

Appendix 1 Akaroa Country Walks

This appendix gives information on the Akaroa Country Walks network to assist the Council to appreciate and understand how tracks in Akaroa are currently presented and promoted to the public through tourism information centres and websites.

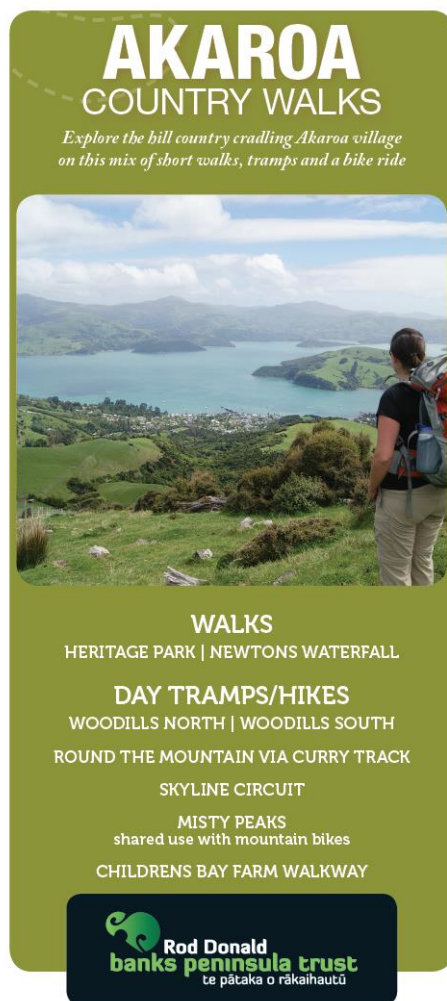


Figure 1 Akaroa Country Walks brochure cover listing Newtons Waterfall and Misty Peaks

The brochure is produced by the Rod Donald Banks Peninsula Trust and available at all Information Centres on Banks Peninsula, the DOC visitor centre in Christchurch and at several other retail outlets.



Figure 2 Main map from brochure showing walks in Misty Peaks numbered 6 and 7 and the interconnections between tracks.

Walkers using the brochure are encouraged to access Misty Peaks via walk 5 - Skyline circuit for an extended ridgeline experience and to minimise road walking. Mountain bikers access via Stony Bay Road.

A matching map is on the website www.bankspeninsulawalks.co.nz. All walking enquiries received through the principal tourism website www.akaroa.com are redirected through to www.bankspeninsulawalks.co.nz.

6 MISTY PEAKS



4-7 hours circular from Akaroa, 740 m climb, 14 kms.

5½-8½ hours done in conjunction with Skyline Circuit - longer ridgeline walk and less on road. 15 kms

Easy option: Drive to Stony Bay Road trailhead and walk to Flea Bay Road. 2½ hours easy tramping there and back.

Mountain bike circuit from Akaroa

A challenging mountain bike ride from Akaroa or an excellent addition to Skyline circuit for more time on the tops.

Directions: The full walk or mountain bike ride starts in Akaroa at Rue Balguerie. When you reach Nettle Creek studio, carry straight ahead up Stony Bay Road and follow it almost all the way to the top (approx 2 hours walking). The entrance to Misty Peaks Reserve is at a farm gate just before the ridgeline. Skyline Circuit walkers also join the route here.

Follow the farm track skirting gently below the rocky summit of Mt. Berard. The views of the harbour are spectacular, until the track goes behind the pine plantation. When you reach a metal gate with views to the Pacific go through it and stay on the track going downhill. You lose about 100 m in

altitude before the track rounds a bluff and climbs again to reach the ridgeline south of the Brasenose summit. As it flattens out, make a little diversion across the open land to a rocky outcrop for more magnificent views of the harbour.

Return to the farm track and follow it to the Flea Bay Road trail head. Then walk up Flea Bay Road to Lighthouse Road and down Lighthouse Road back to Akaroa.

Nettle Creek junction



7 NEWTONS FALLS



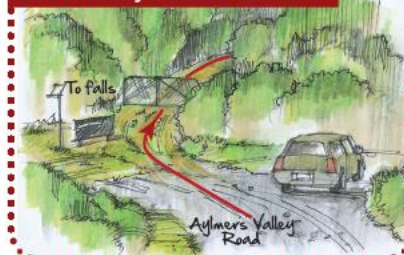
1 hour return
3 km 175 m climb
(gentle)
Easy option: drive to road end for 10 min walk to falls

A delightful walk past charming cottages and along a quiet lane to a waterfall beauty spot.

Directions: Walk up Rue Jolie past the school. Turn left onto Bruce Terrace and after a little bridge turn left again onto Percy Street where you will pass many lovely cottages.

Turn left when you reach Aylmers Valley Road. Now follow this quiet gravel road for 1 km to its end at the lower entrance to Misty Peaks Reserve.

Lower Misty Peaks trail head



If you prefer to drive, there is a small parking area at the end of Aylmers Valley Road.

At the reserve entrance, walk through the metal gate and along a farm track

Bush Track



Then after going over a stile, branch right and then almost immediately sharp right again into the bush on a small track signalled by an

orange marker. In another few minutes you will reach the falls. Take care on the bush track after rain as it will be slippery.

A former beauty spot re-opens

Newtons Falls was such a popular beauty spot that it was put forward for protection as a reserve under New Zealand's first Scenery Preservation Act in 1906. However, it was passed over, and some time later, being on private land, it was closed to public access. In a twist of fate the land was purchased by Christchurch City Council in 2007 to create Misty Peaks Reserve, enabling public access to be restored a century later.

Figure 3 Misty Peaks and Newtons Falls detailed walk descriptions

Akaroa Country Walks Trail Head signage is currently installed at the track entrances at the top of Woodhills Road, Purple Peak Road, Heritage Park on Long Bay Road, Grehan Valley Road below Purple Peak Curry Reserve entrance and at the Akaroa Information Centre. The signs were developed as a joint project with the Council to match the main map given in the Akaroa Country Walks brochure and include the Misty Peaks walks.



Figure 4 Trail head sign at top of Purple Peak Road

Akaroa Country Walks

A variety of walking routes enable you to explore the hills above Akaroa giving beautiful views over the harbour.

All walks involve steep up and down hill climbs on unformed surfaces requiring a moderate fitness level.

Most routes involve some walking on public roads shared with vehicles and also cross private farmland where stock may be grazing.

Akaroa Country Walks brochure with detailed detailed directions is highly recommended to assist with route finding. Available at Akaroa Information Centre.



Safety is your responsibility. Plan, prepare and equip yourself well.

All tracks can be slippery – **sturdy footwear and walking sticks recommended.** Weather can change quickly – **check the forecast before departure.** Upland areas are often colder than Akaroa – **always take layered and waterproof clothing.**

When cloud covers hilltops – **choose a lower level walk.**

Toilets and water – **carry your own water and food on longer walks. Toilets as marked on map.**

Cliffs and other hazards – **keep children under supervision.**

Private land crossing – **keep to marked tracks and avoid disturbing stock.**

Road walking – **keep alert for vehicles, even on quiet roads.**

High fire danger – **absolutely no fires to be lit anywhere.**

Akaroa's upland reserves

Large reserves above Akaroa protect its stream-fed water supply. The Purple Peak Curry and Hinewai Reserves are privately owned and jointly managed by staff from Hinewai. Conservation comes first on these reserves, with grazing stock excluded to facilitate the natural process of native forest restoration. Misty Peaks is owned by the Christchurch City Council and still lightly grazed.

You are welcome to visit the reserves, but please keep strictly to the marked tracks and do not contaminate waterways. Respect that dogs are not permitted on reserves and mountain bikes in Misty Peaks only.

Route information

Akaroa Country Walks are designed to start and end in the Akaroa village, so you can leave your car there. The full route descriptions and times starting in Akaroa are listed below along with some alternative options from here.

Track #	Track Name	Time	Dogs	Route description from Akaroa township	Other options starting here	Track #	Track Name	Time	Dogs	Route description from Akaroa township	Other options starting here
1	Woodlills North	2 hours circular		Start on Woodlills Road. At the sharp bend go straight ahead to Woodlills Stock Route. Continue up Stock Route to the first or second gate signposted Tree Crop Farm. Enter Tree Crop Farm and follow white poles to Grehan Valley Road. Walk back to Akaroa on road. Be alert and expect vehicles.	Take 2 Woodlills South to Grehan Valley Road. Cross road to enter Tree Crop Farm and follow markers across farm, returning to Akaroa on Woodlills Stock Route.	5	Skyline Circuit	4-7 hours circular		Start on Rue Balguerie and walk out of the village turning left at Nettle Creek Studio onto Purple Peak Road. Continue up Purple Peak Stock Route to Purple Peak Saddle. Turn right at the Saddle and follow wooden signs to Summit. A stiff climb requiring good fitness. From Stony Bay Summit take Tara Track to Stony Bay Road and return to Akaroa on road. Keep alert for occasional vehicles.	Extend your walk with a visit to lower Hinewai Reserve. From Purple Peak Saddle continue on straight ahead down into Otanerito valley on the other side for many more tracks.
2	Woodlills South	1½ hours circular		Start on Rue Grehan leading to Grehan Valley Road. Opposite Tree Crop Farm enter Woodlills Farm and follow marked track to Purple Peak Road. Return to Akaroa down this road, keeping alert for occasional vehicles.	Use 2 Woodlills South track to access 6 Woodlills North, Purple Peak Curry Reserve or make a loop back to Akaroa.	6	Misty Peaks	4-7 hours circular		Start on Rue Balguerie and walk out of the village, straight up Stony Bay Road. Just before the top, turn right on track signposted Misty Peaks. Follow the track below the ridge line, through the pine forest, and then cross over with great views of Pacific Ocean and Flea Bay. Return to Akaroa on Flea Bay and Lighthouse Roads.	Follow 5 Skyline Circuit to Stony Bay Road. Join 6 Misty Peaks 100m down Stony Bay Road on the Akaroa side. Add 1½ hours to time. No mountain bike access this way.
3	Heritage Park	20 mins circular		Drive to Heritage Park on the Long Bay Road, or walk there as an extension to 2 Woodlills North track. Make a 20 minute loop around the park to see commemorative plantings. Allow more time to enjoy a picnic with great views.	Take 2 Woodlills South to Grehan Valley Road. Turn right up road to Purple Peak Curry Reserve and follow Curry Track to Heritage Park. Loop back using 2 Woodlills North. Allow 2 hours.	7	Newtons Falls	1 hour return		Start on Rue Jolie and turn left onto Aylmers Valley Road. Walk to road end, then enter the Misty Peaks Reserve and follow the signposted track to the waterfall.	Return to Akaroa to access this walk.
4	Round the Mountain via Curry Track	4-5 hours circular with options		Follow 2 Woodlills North to upper Tree Crop Farm gate and then continue up to Heritage Park. Walk through park to its upper entrance. Across the carpark join Curry Track through Purple Peak Curry Reserve and up to Purple Peak ridge line and then down the other side to Brocherie Road carpark. Turn right and follow wooden signposts back to Akaroa via Purple Peak Saddle and down Purple Peak Stock Route.	From here do Round the Mountain in reverse for a superlative walk. Continue uphill and turn left at Purple Peak Saddle to Brocherie Road carpark. Then take Curry Track to Hoheria Junction and return here via 2 Woodlills South.	8	Childrens Bay Farm Walkway	1 hour return or 3 hour circular		Start at Recreation Ground car park, just past boat compound. A small track leads to the boardwalk to Childrens Bay. From Childrens Bay follow marked track across private farmland to mine sculpture on headland. Return to Akaroa for a 1 hour walk. For the longer circuit turn west to follow the track to Takamatua. Make a circular return via Old Coach Road and Top to Holiday Park.	Return to Akaroa to access this walk.

KEY: ——— Tramps/Hikes ——— Tramps/Hikes on Roads — Only allowed on public roads and stock routes, 6 Misty Peaks and 7 Newtons Falls

Visit www.bpwalks.co.nz to see all walks on Banks Peninsula, check current status, report problems or upload your photos!



Figure 5 Sign content

Appendix 2 Potential Unformed Legal Road connections providing improved off-road access from Akaroa

Public access to Misty Peaks would be improved if walking/biking connections were developed using unformed legal roads. The map below shows all public roads (formed and unformed) in purple. Suggested routes to develop for access are overlaid with red dotted lines.

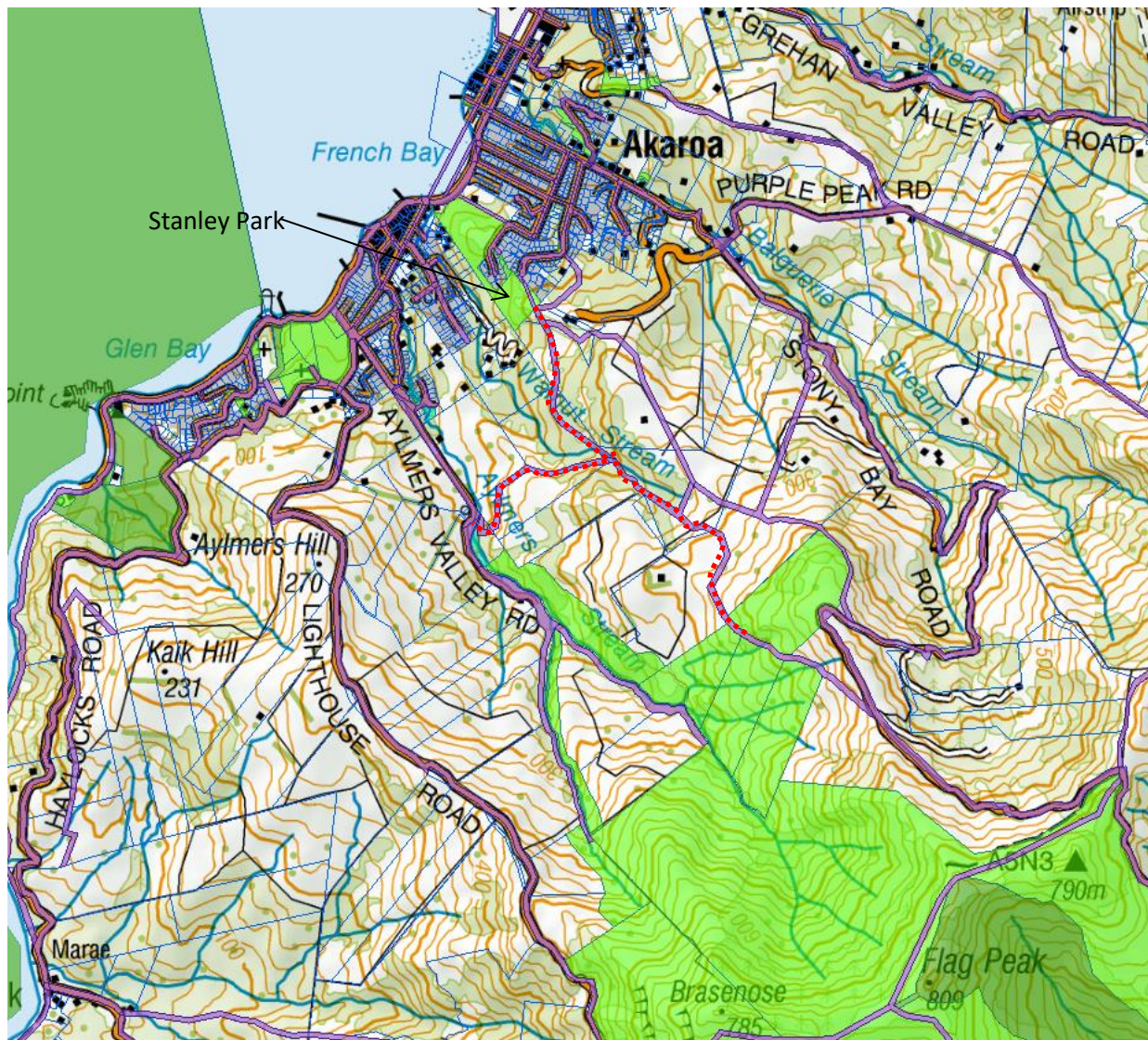


Figure 6 Potential walking/biking connections via unformed legal roads from Stanley Park

Note: The Rod Donald Trust has not walked or attempted to ground-truth these unformed legal road options, but would be available to assist the Council with this. The unformed legal roads highlighted are selected because they appear to avoid dwellings and pasture land, but clearly there are other options also available.